

### 115 Dress

Burda sizes 34, 36, 38, 40, 42, 44  
Length from waist 62 cm (24½ ins)

### Materials

Cotton satin,  
width: 140 cm (55 ins)  
length: 2.30 – 2.30 – 2.30 – 2.30 – 2.80 – 2.80 m  
(2 1/2 – 2 1/2 – 2 1/2 – 2 1/2 – 3 – 3 yds).

Interfacing.

Elastic,  
width: 7 mm (¼ in)  
length: 0.70 – 0.75 – 0.75 – 0.80 – 0.85 – 0.90 m  
(¾ – ¾ – ¾ – ¾ – 1 – 1 yd).

Recommended fabrics: Lightweight dress fabrics with some body.

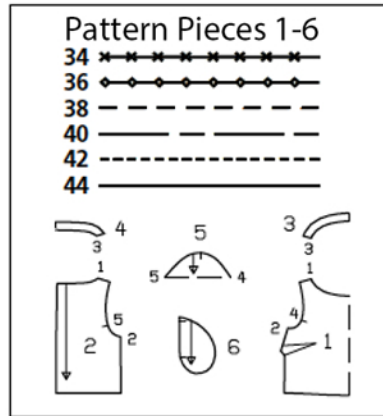
### Preparations

Print the pattern out on letter or A4 sized paper. It is very important to not scale the document. Your pattern will print on multiple pages, which you will then tile together. Arrange the sheets on a large, hard and flat surface matching up the numbers and letters (i.e. 6A to 6A).

Trace the pattern pieces from the pattern sheet. Follow lines and details for style 115.

**Burda style magazine patterns do not have seam allowance included.**

Seam and hem allowance to be added:  
Seams and edges 1.5 cm (5/8 in). Measurements for pieces a to d include allowances.



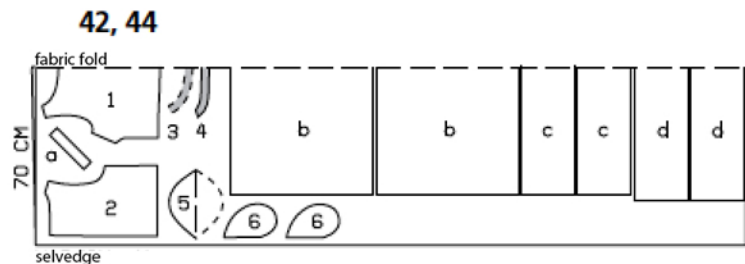
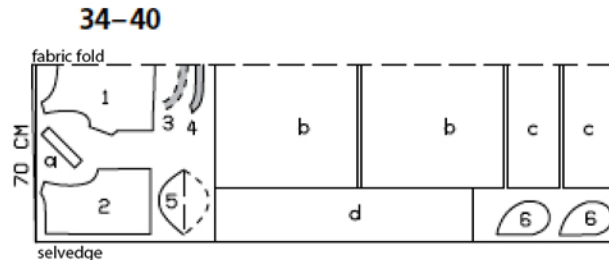
### Cutting Out

- 1 front, on a fold 1x
- 2 back 2x
- 3 front neck facing, on a fold 1x
- 4 back neck facing, on a fold 1x
- 5 sleeve, on a fold 2x
- 6 pocket piece 4x

Draft the following pieces NOT included in the pattern:

- a) 2 bias strips for armholes, 17 – 17 – 18 – 18 – 19 – 19 cm (6¾ – 6¾ – 7 – 7 – 7½ – 7½ ins) long, 4 cm (1 5/8 ins) wide (incl. allowances),
- b) 2 skirt pieces, 91 – 93 – 95 – 97 – 99 – 101 cm (36 – 36¾ – 37½ – 38¼ – 39 – 39¾ ins) wide, 56 cm (22¼ ins) long (incl. allowances),
- c) 2 hem bands, 91 – 93 – 95 – 97 – 99 – 101 cm (36 – 36¾ – 37½ – 38¼ – 39 – 39¾ ins), 21 cm (8 ins) wide, finished width 9 cm (3½ ins) (incl. allowances),
- d) tie band in 2 pieces, each 96 – 98 – 100 – 102 – 104 – 106 cm (37¾ – 38¾ – 39½ – 40¼ – 41 – 41¾ ins) long, 21 cm (8 ins) wide, finished width 9 cm (3½ ins) (incl. allowances).

Interfacing: See shaded area on pattern layout.



## Sewing

Stitch bust darts. Press darts down.

On bodice, stitch centre back seam and shoulder seams. Stitch shoulder seams of facing. Press all seams open.

Finish neck edge with facing  
Lay the facing on the neck edge, with shoulder seams matching. Pin neck edge lines together and stitch. Trim seam allowances and clip curves. Turn facing up and stitch to the seam allowances, close to the attachment seam (= understitch). Turn the facing to the inside. Press the neck edge. Baste the inner edge of the facing in place.

Stitch side seams of bodice. Press seams open.

Fold each sleeve on fabric fold line, wrong side facing in, and press. Stitch sleeve edges together to front and back above seam marks (seam numbers 4 and 5). Trim allowances of sleeve attachment seams and allowances below sleeves to 1 cm (3/8 in) wide. Fold bias strips for armholes in half lengthwise, right side facing out, and press. Pin folded bias strips to armhole edges, below sleeves so that open edges meet seam allowance edge and ends of strips lie over lower sleeve edges. Stitch along marked armhole edges. Trim seam allowances. Turn bias strips to inside. Below sleeves, stitch 7 mm (1/4 in) from armhole edges.

Stitch skirt side seams, leaving 14 cm (5 1/2 ins) open for pockets, 11 cm (4 ins) below upper skirt edge.

In-seam pockets: Pin pocket pieces to seam allowances on pocket opening edges, right sides facing. Stitch pockets in place, directly along marked seam lines. Press pocket pieces forward and stitch together.

Gather upper skirt edge to match bodice. Stitch skirt to bodice. Neaten edges of allowances together. Working from the bodice side, stitch elastic to allowances of skirt attachment seam, using a zigzag stitch and beginning and ending at one side seam.

Finished length of elastic measures 64 – 68 – 72 – 76 – 80 – 84 cm (25 1/4 – 26 3/4 – 28 1/2 – 30 – 31 1/2 – 33 ins). Press seam allowances up.

Stitch ends of hem band pieces together. Press seams open. Fold band in half lengthwise, right side facing out, and press. Stitch open band edges together to lower dress edge, matching seams of band to side seams. Press seam allowances down.

### Tie band

Lay the tie band pieces (d) together, right sides facing. Pin together on one narrow end. Stitch as pinned. Press the seam allowances open. Fold the tie band lengthwise, right sides facing in. Stitch along the narrow ends and the long edge, leaving an opening approx. 10 cm (4") long, for turning the tie band. Trim the seam allowances, trimming diagonally across the corners. Turn the tie band right side out and press. Sew the opening closed by hand.

## Additional Information:

**Burda patterns do not include seam and hem allowances.** We recommend adding 1-2 cm (3/8 - 3/4 inch) for seams and 2-5 cm (3/4 - 2 inch/es) for hems. Refer to your specific pattern instructions for exact measurements.

The fabric requirements are based on the fabric used for the original designs. These amounts will change if you use fabric of a different width. The pattern of the fabric determines whether all the pieces must be cut in the same direction or whether some can be reversed to save fabric.

The cutting layout printed with the instructions shows the best way to place the pattern pieces on our original fabric. Fold the fabric double with the right side facing in. The fabric then has a fold edge and a selvedge edge. When cutting from a single fabric layer, the right side should face up.

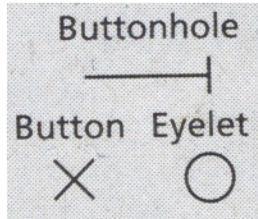
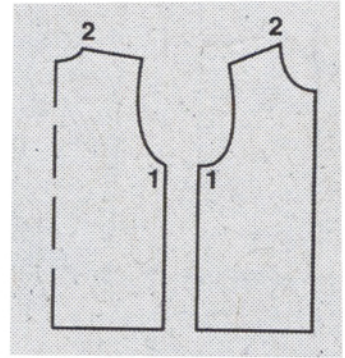
Pattern pieces which are shown in the cutting layout with broken outlines should be pinned to the fabric with their printed side facing down.

Grey shaded areas in the cutting layout indicate which pieces are to be interfaced.

Transfer the pattern piece lines to the wrong side of your fabric with burda dressmaker's carbon paper. Hand-baste along lines (e.g. for pockets or centre front) to make them visible on the right side of the fabric.

## Key Symbols:

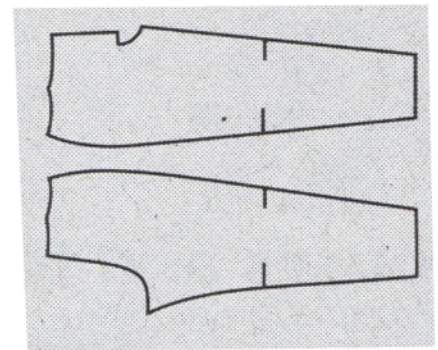
**Seam numbers**  
show where pattern pieces must be sewn together. Match pieces with the same numbers.



**Seam marks**  
on long seams. Match the small symbols to one another.



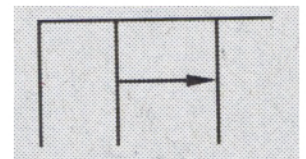
**Presser foot**  
is the symbol for seam and top-stitching lines.



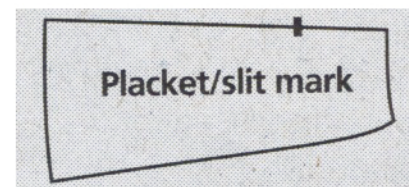
**Scissors**  
indicate edges to be cut without seam allowances and also slash lines, e.g. pocket openings.



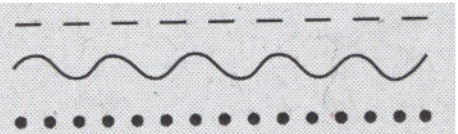
**Pleat symbol**  
Fold pleat in direction of arrow.



**Placket/slit mark**  
Indicates beginning/end of placket/slit.

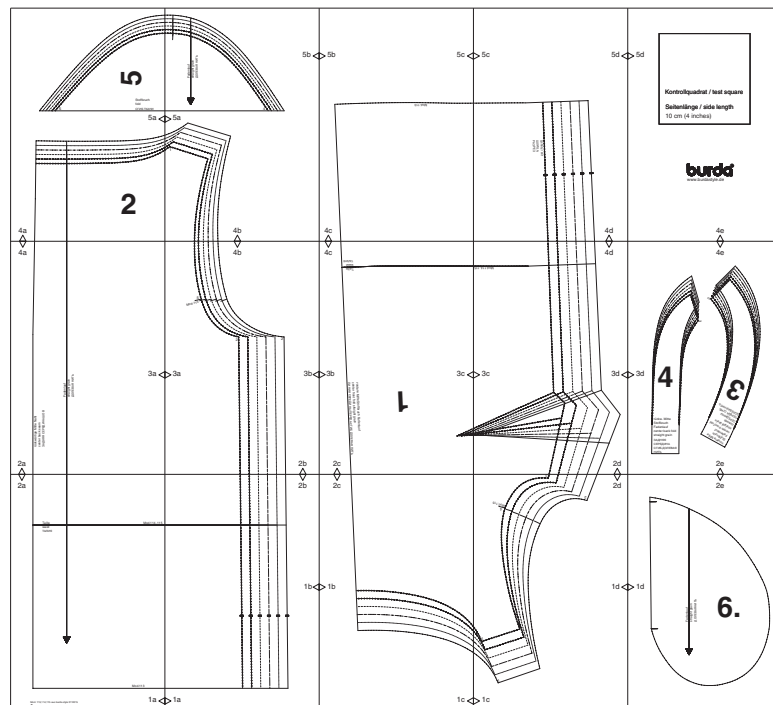


**Gather**  
**Ease**  
**Stretch**



# burda Download-Schnitt

Modell 115 Burda Style 07/2015



Copyright 2015 by Verlag Aenne Burda GmbH & Co. KG, Hubert-Burda Platz 2, D-77652 Offenburg  
Sämtliche Modelle, Schnittteile und Zeichnungen stehen unter Urheberschutz, gewerbliches Nacharbeiten ist untersagt.  
Der Verlag haftet nicht für Schäden, die durch unsachgemäße Handhabung des Schnitts, der Materialien,  
unsachgemäße Ausführung der Tipps und Anleitungen oder unsachgemäße Nutzung der Modelle entstehen.

2a

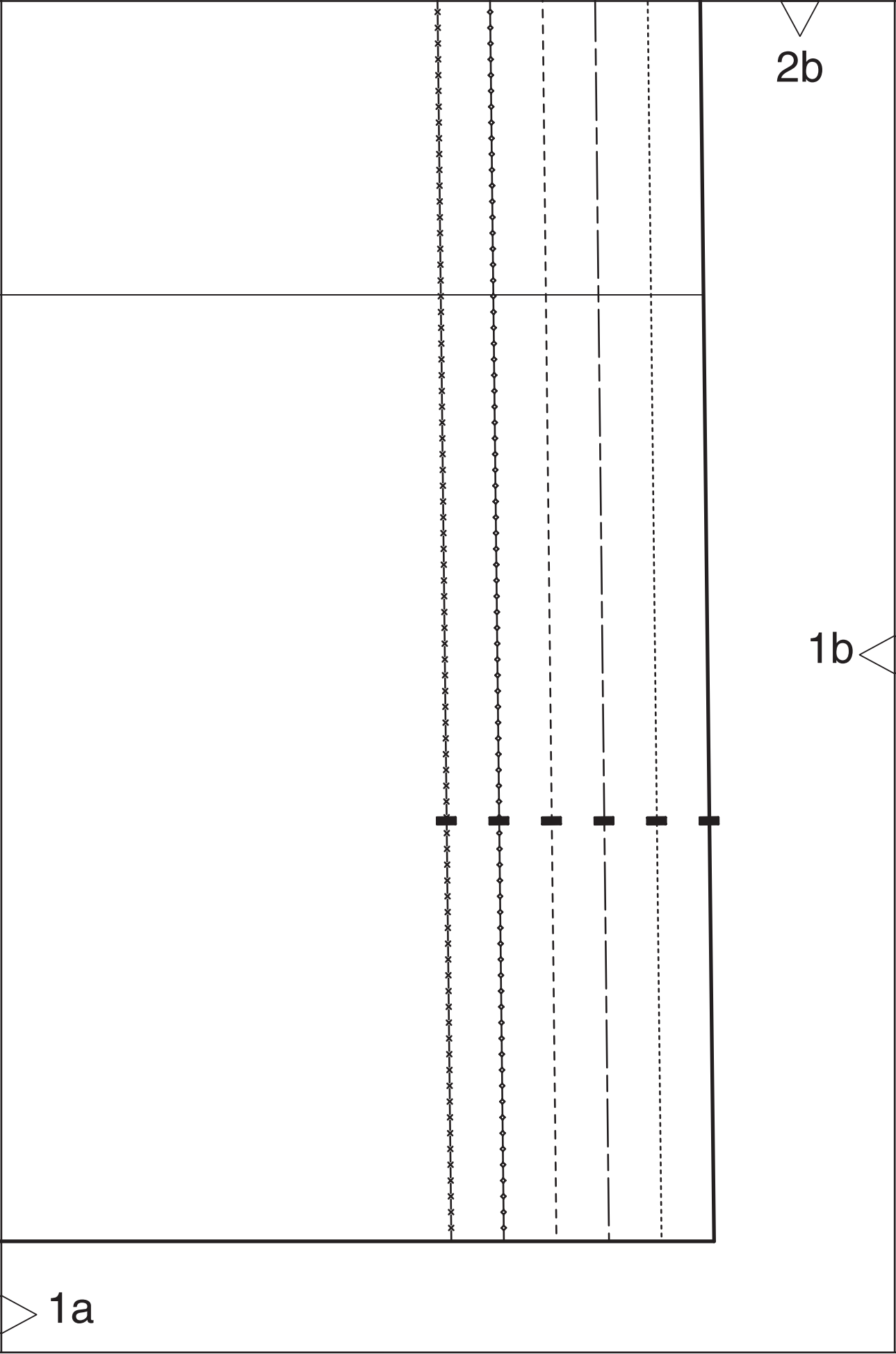
Taille  
waist  
ТАЛИЯ

Mod.114,115



Mod.113

1a



2b

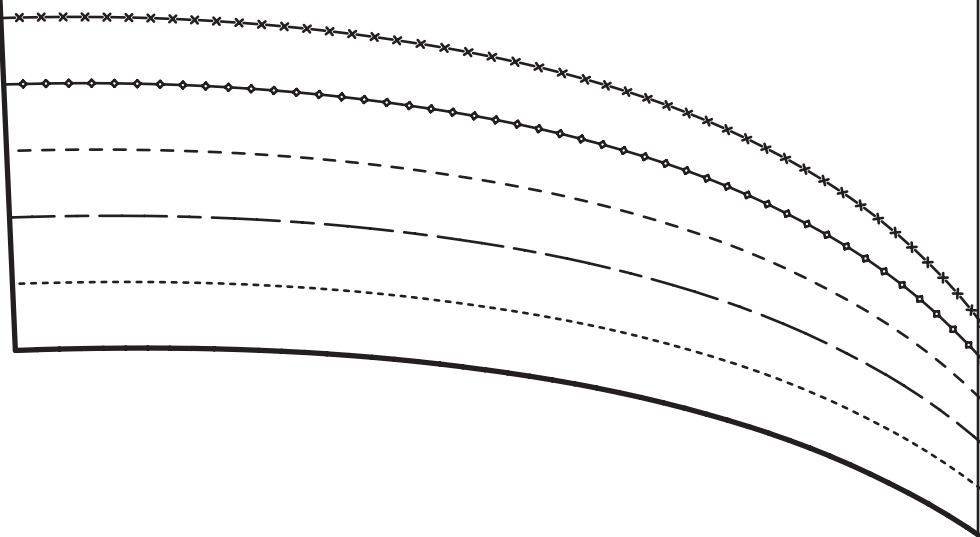
1b

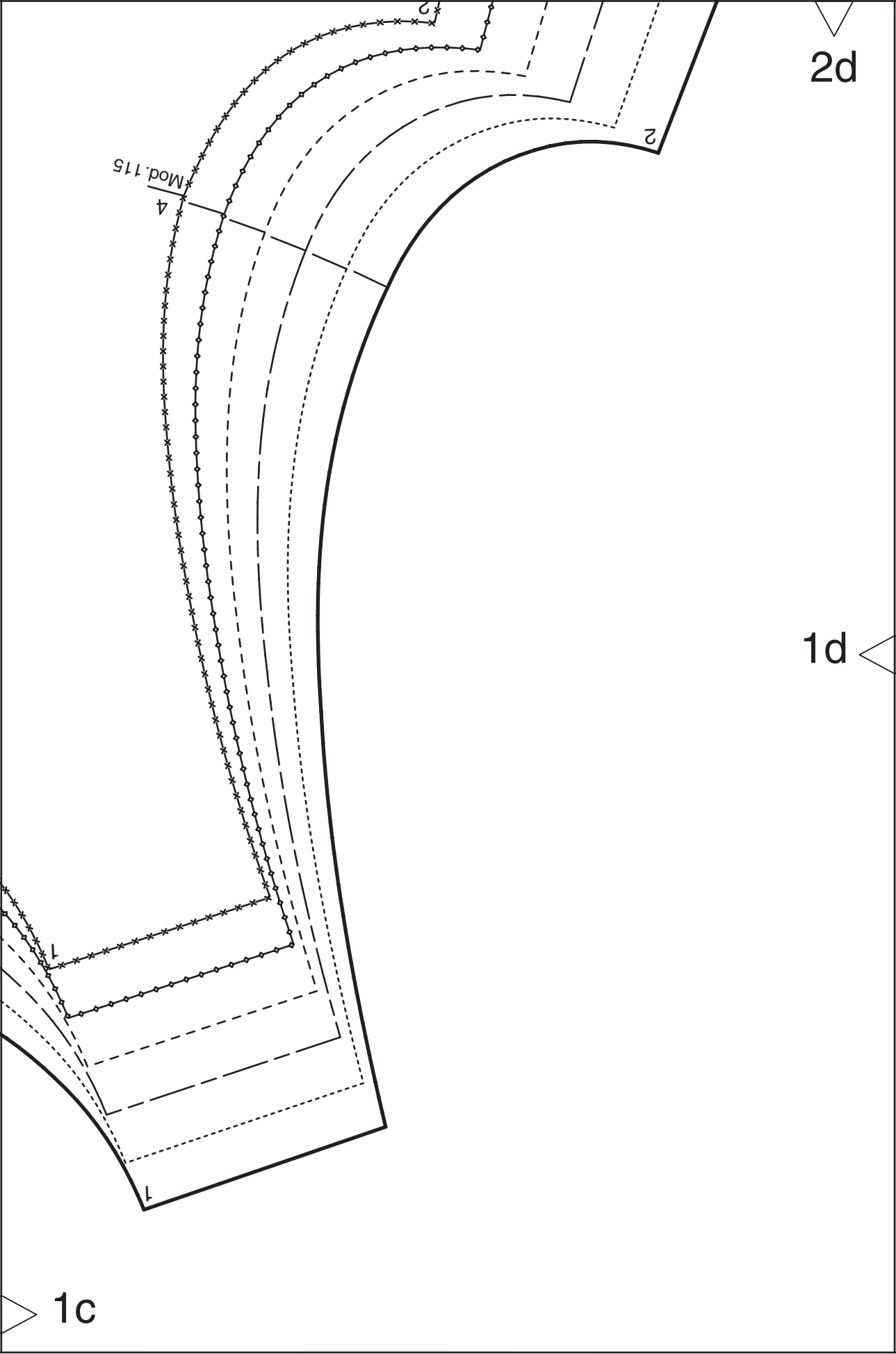
1a

2c

1b

1c



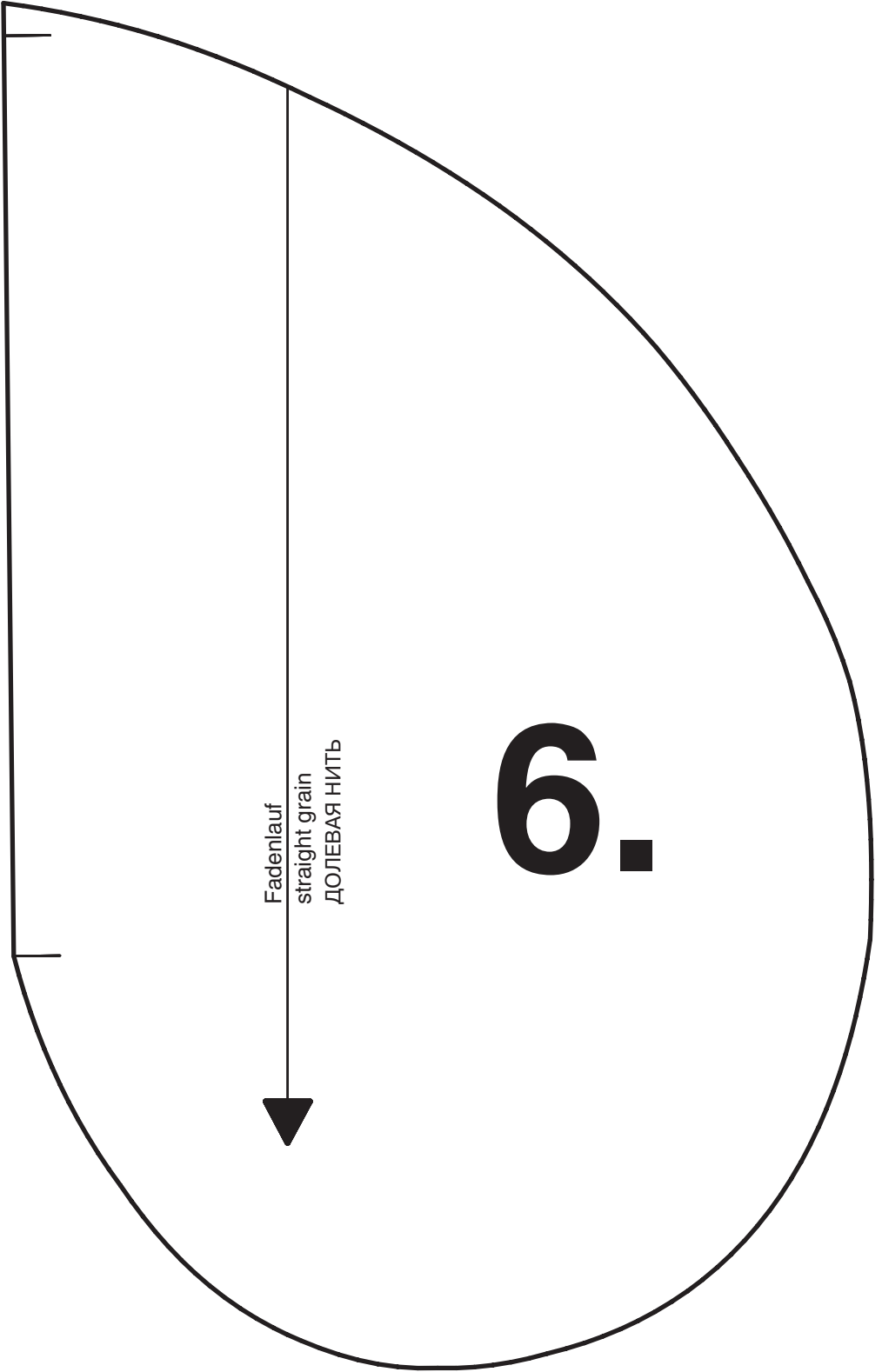


2e

1d

Fadenlauf  
straight grain  
ДОЛЕВАЯ НИТЬ

6.



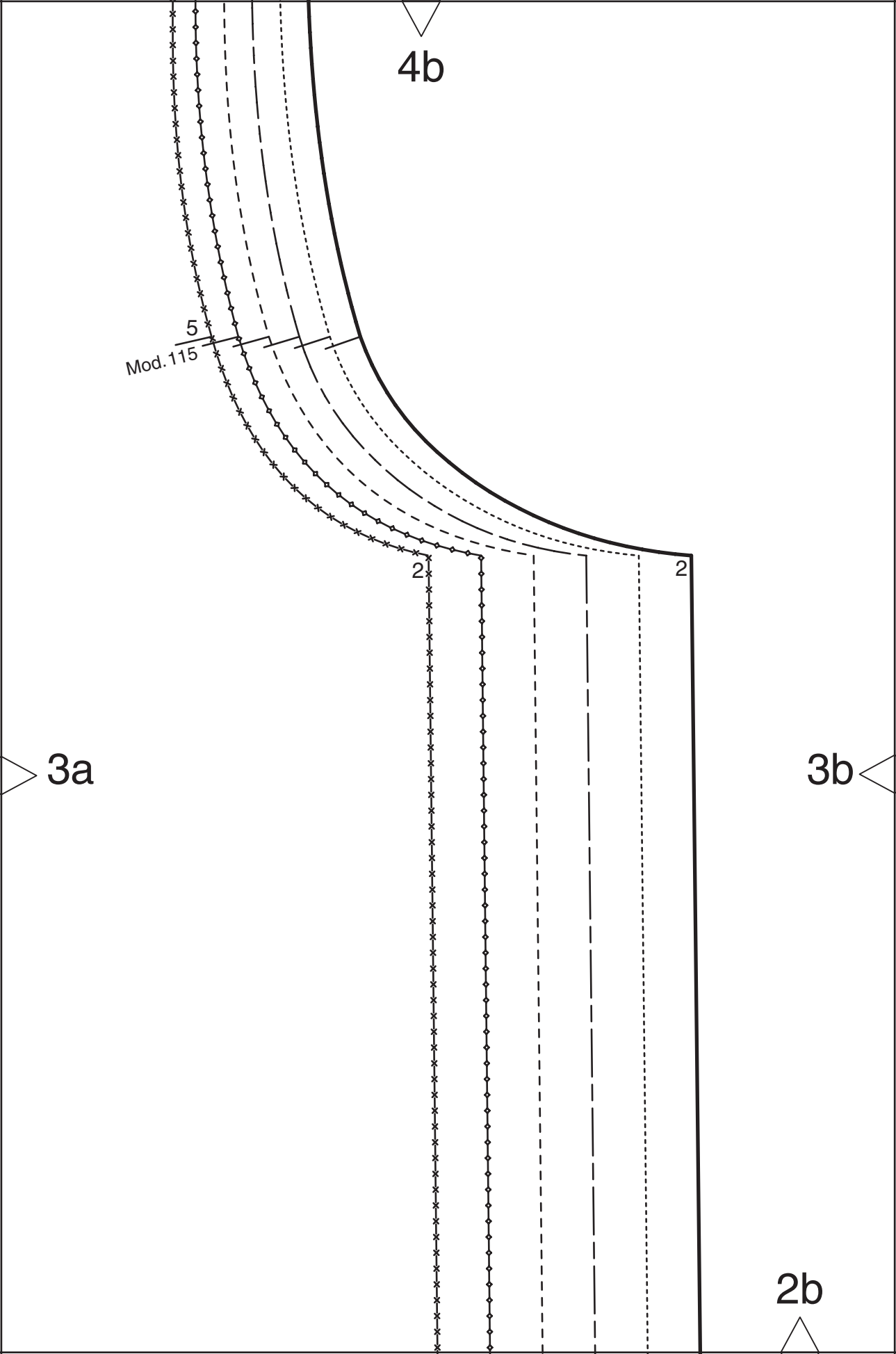
4a

2a

rückwärtige Mitte Naht  
center back seam  
ЗАДНЯЯ СЕРЕДИНА ШОВ

Fadenlauf  
straight grain  
ДОЛЕВАЯ НИТЬ

3a



4c

Taille  
waist  
ТАЛИЯ

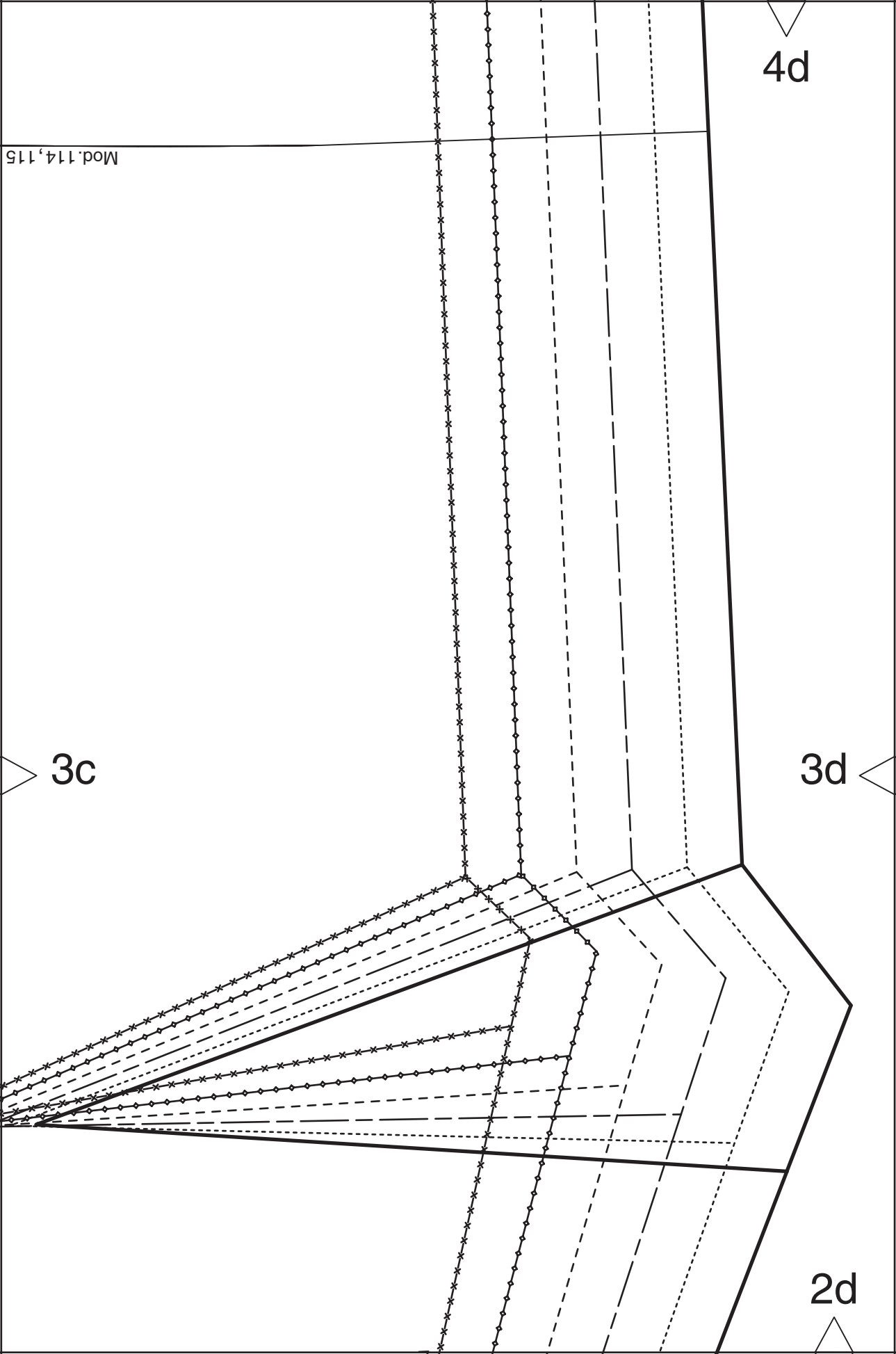
3b

3c

vordere Mitte Stoffbruch Fadenlauf  
center front fold straight grain  
ЛИНИЯ СЕРЕДИНЫ ПЕРЕДА СГИБ ДОЛБЕВАЯ НИТЬ



2c



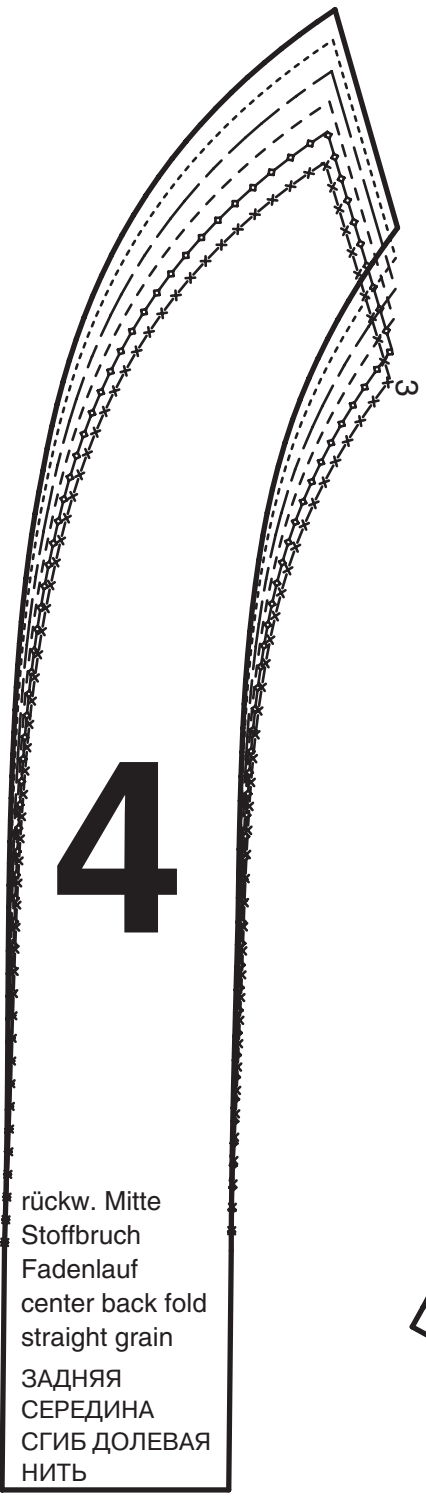
4e



2e

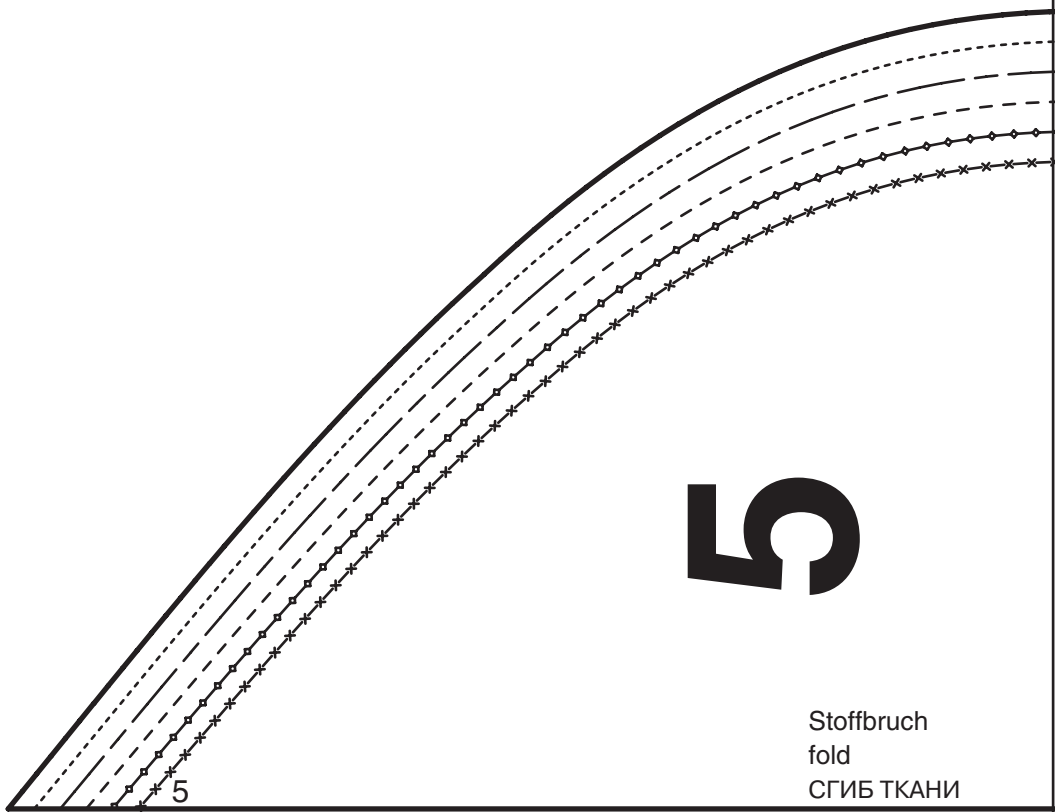
3d

4



rückw. Mitte  
 Stoffbruch  
 Fadenlauf  
 center back fold  
 straight grain  
 ЗАДНЯЯ  
 СЕРЕДИНА  
 СГИБ ДОЛЕВАЯ  
 НИТЬ

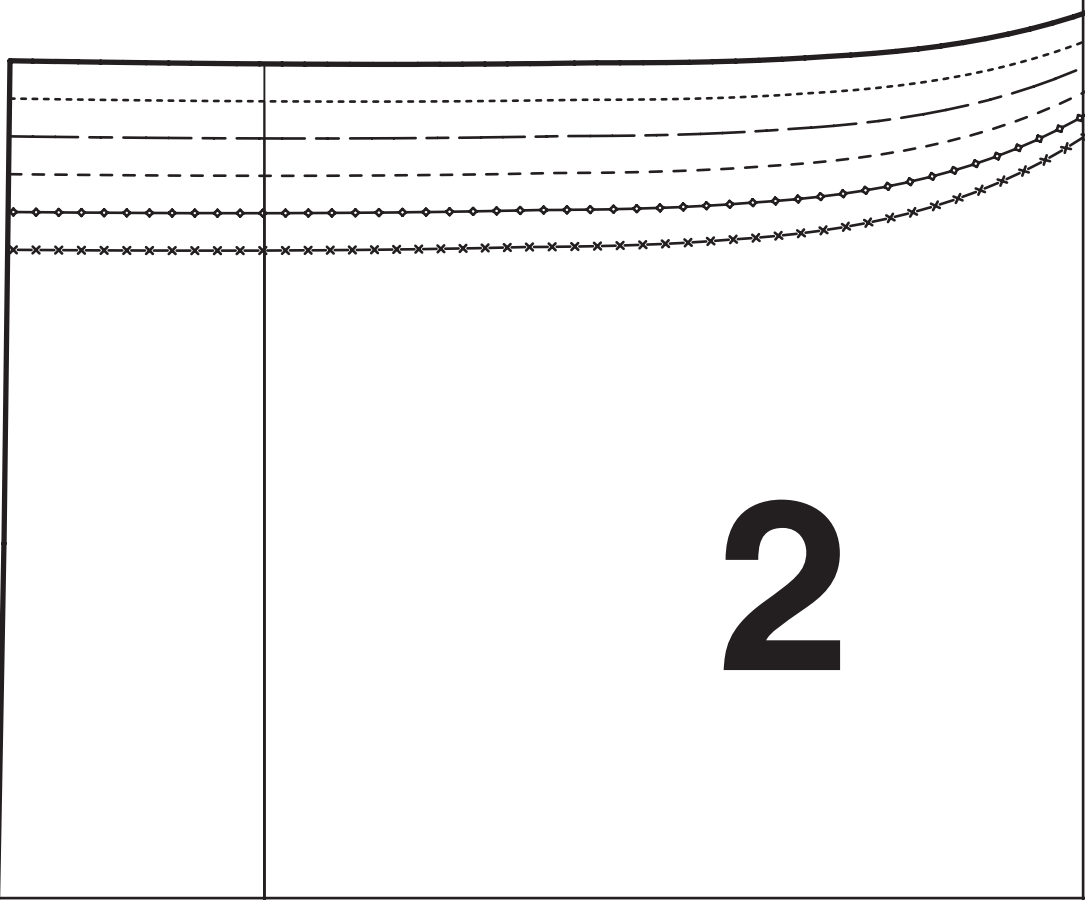
vordere Mitte  
 Stoffbruch  
 Fadenlauf  
 center front fold  
 straight grain  
 ЛИНΙΑ  
 СЕРЕДИНЫ  
 ПЕРЕДА СГИБ  
 ДОЛЕВАЯ НИТЬ



5

Stoffbruch  
fold  
СГИБ ТКАНИ

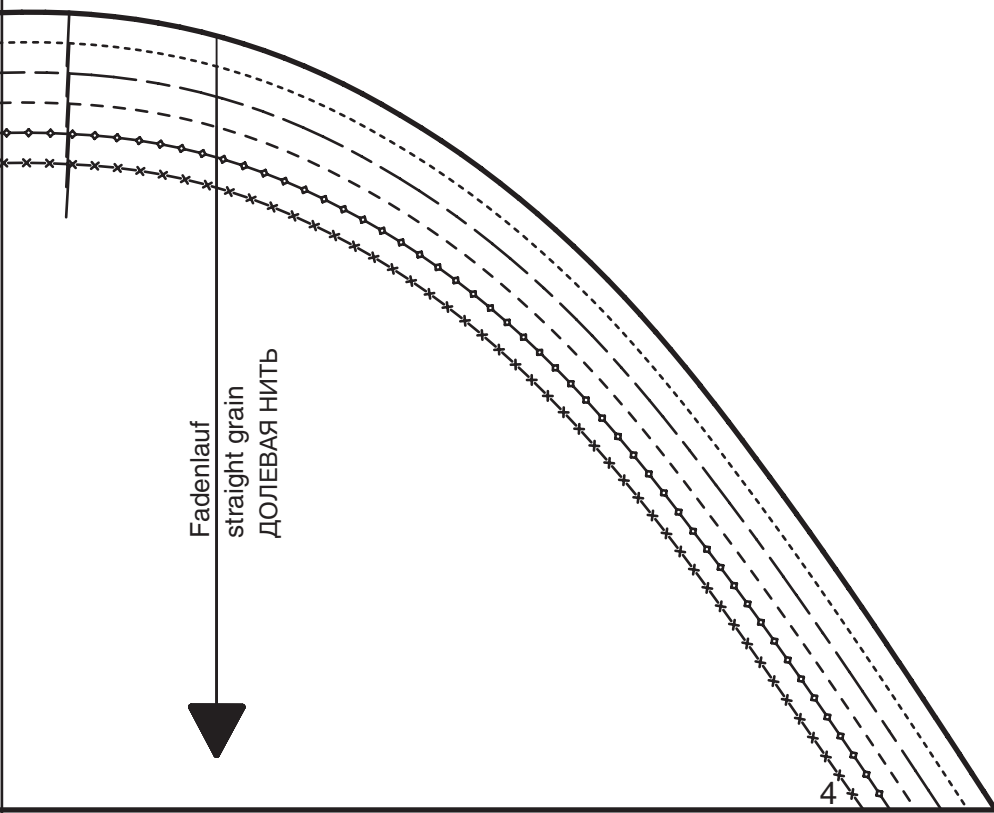
5a



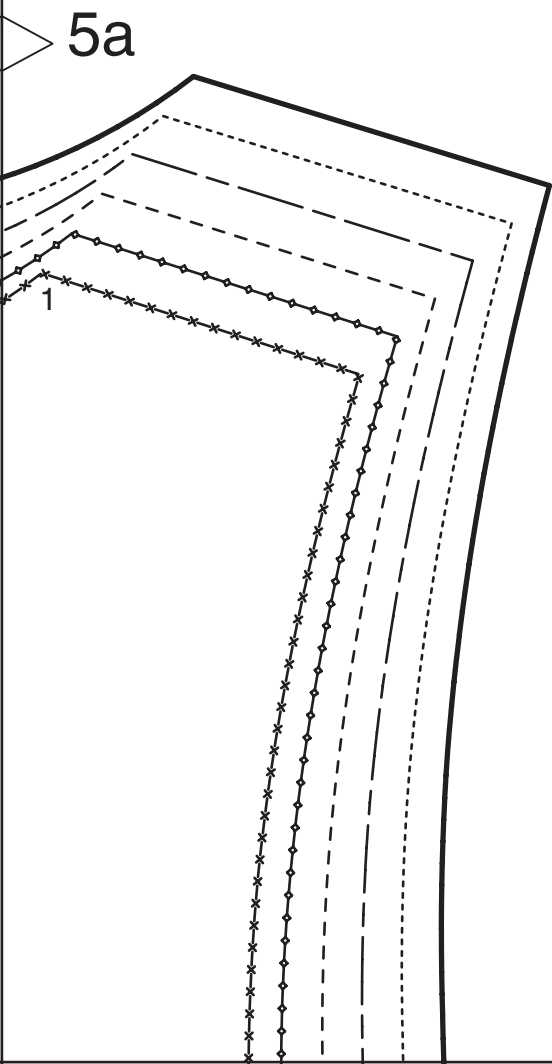
2

4a





5b



5a

4b

5b

5c

Mod. 113

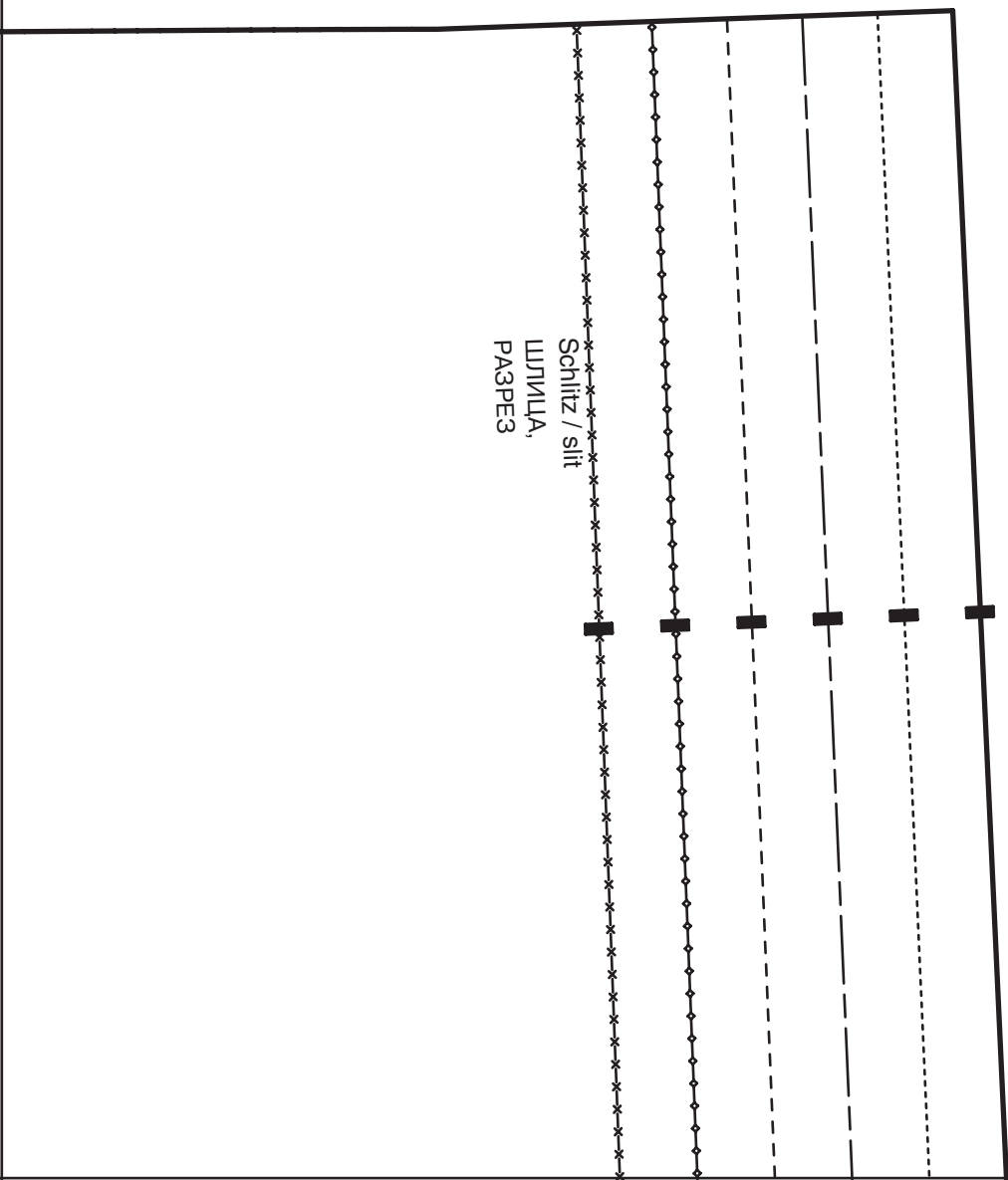
4c

5c

5d

Schlitz / slit  
ШЛИЦА,  
РАЗРЕЗ

4d



5d

Kontrollquadrat / test square

Seitenlänge / side length  
10 cm (4 inches)

**burda**<sup>®</sup>  
[www.burdastyle.de](http://www.burdastyle.de)

4e