



FALL 2011

zip-zip purse

PATTERN
REPLACEMENT

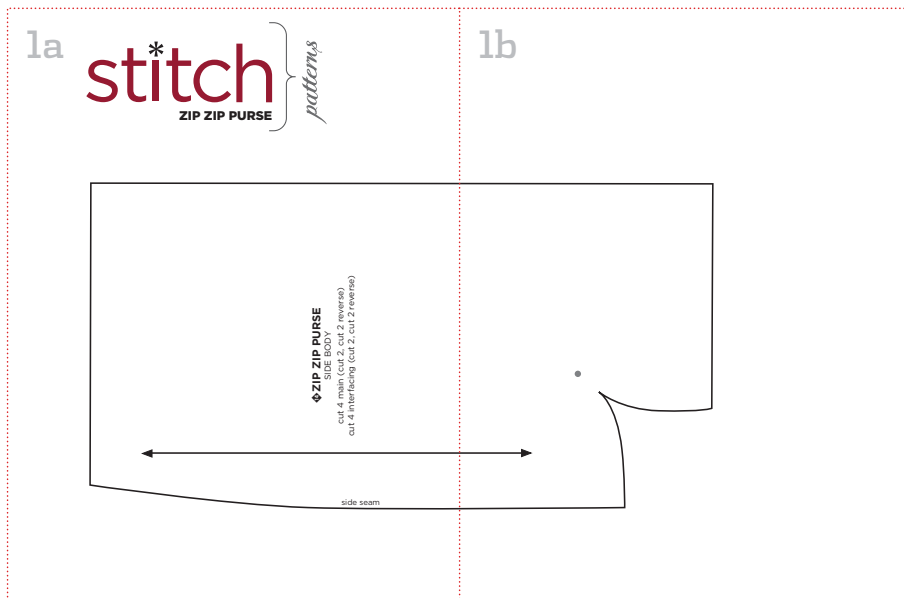
by **REBECCA KEMP BRENT**

Project photo on page **45**; instructions on page **94** of *Stitch* Fall 2011.



Please note: Due to the close placement to the perforation on the Fall 2011 pattern insert, this pattern piece was cut off. This is the complete pattern piece. For project instructions and the remaining pattern pieces, please reference the Fall 2011 issue.

zip-zip purse side body



NOTES When preparing to print templates, make sure that you are printing at 100% and that there is no scaling. Check the settings for page scaling (should be "None") and check the preview to make sure that you will be printing at full size. Make sure that the box labeled "Auto-Rotate and Center" is unchecked (instructions apply specifically to Adobe Reader; if using another PDF reader, check for similar settings).

To ensure that the template has printed at the correct scale, check the size of the TEST SQUARE. The Test Square should be 1" x 1" (2.5 x 2.5 cm).

**TEST
SQUARE**

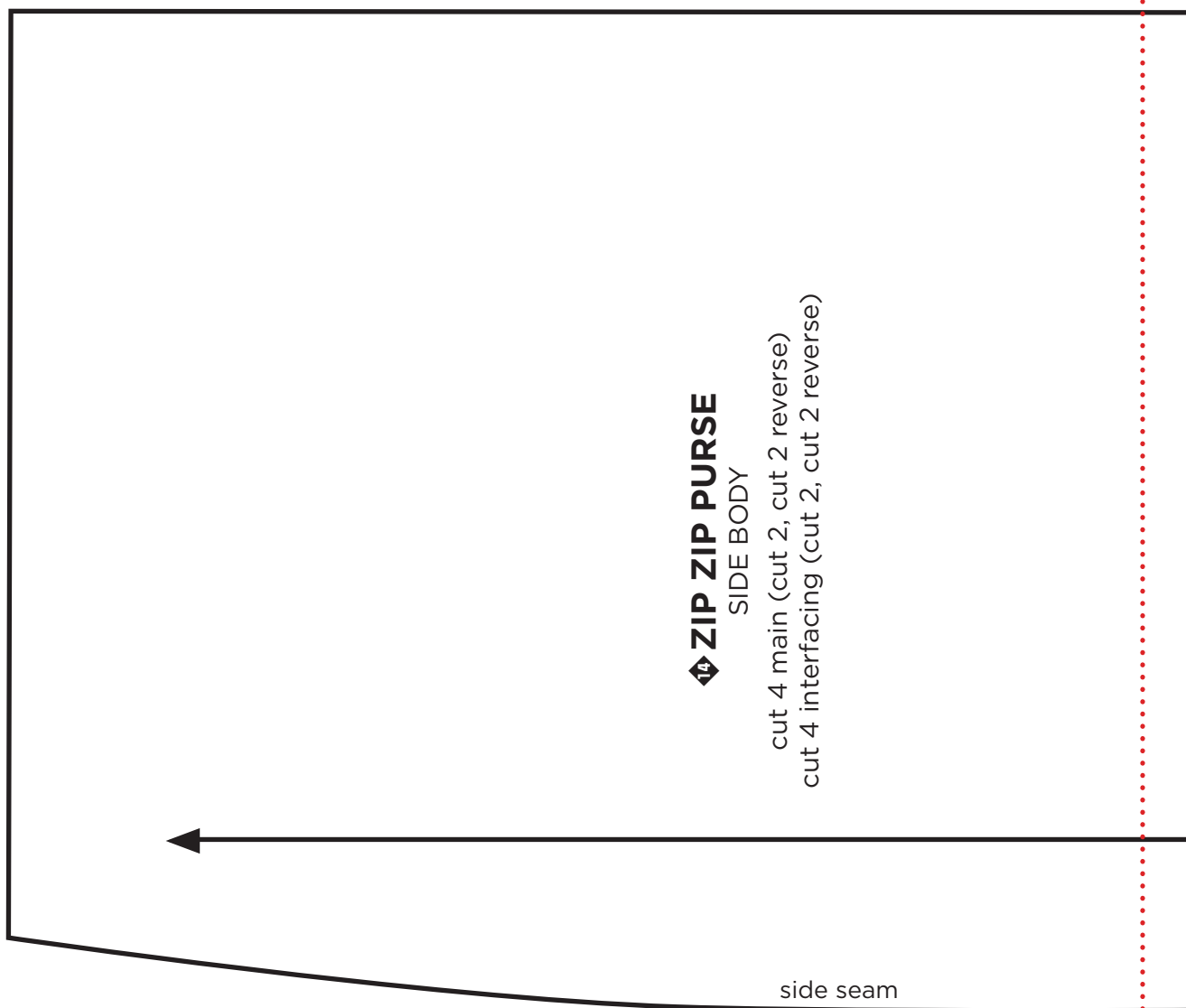
1" x 1"
[2.5 x 2.5 cm]

1a

stitch*

ZIP ZIP PURSE

patterns



1b

