


# SEW NEWS

The Trusted Sewing Source

# SILVERTON BLAZER

BY KIMBERLY PAYNE  
OF STRAIGHT STITCH DESIGNS



[sewdaily.com](http://sewdaily.com) | [interweave.com/sewing](http://interweave.com/sewing)

© 2019 Peak Media Properties, LLC.

# SILVERTON BLAZER

BY KIMBERLY PAYNE OF STRAIGHT STITCH DESIGNS

The Silverton Blazer Pattern by Kimberly Payne of Straight Stitch Designs is an ideal layering piece. It's the perfect casual, everyday blazer, but add it to the right outfit, and you've got a piece worth dressing up for! Sewn up in a ponte knit and in sizes 0–24, the blazer is comfortable, easy to fit and a simple sew on a sewing machine or serger. It wears like a cardigan (you know we love that!), and the knit fabric makes for easy finishing, compared with a traditional woven blazer. This design features many unique details, including a flirty back ruffle.



RECOMMENDED FABRICS
Medium- to heavyweight stable knits such as ponte, scuba knit, double knit and boiled wool knit.

FABRIC REQUIREMENTS		
Fabric Width	44" Wide	54" and 60" Wide
Sizes 0–12	1 <sup>7</sup> / <sub>8</sub> yards (170 cm)	1 <sup>3</sup> / <sub>4</sub> yards (160 cm)
Sizes 14–24	2 <sup>1</sup> / <sub>8</sub> yards (190 cm)	

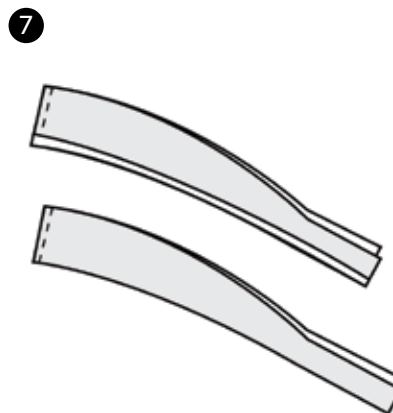
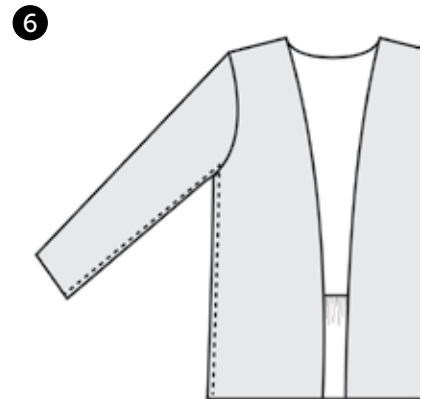
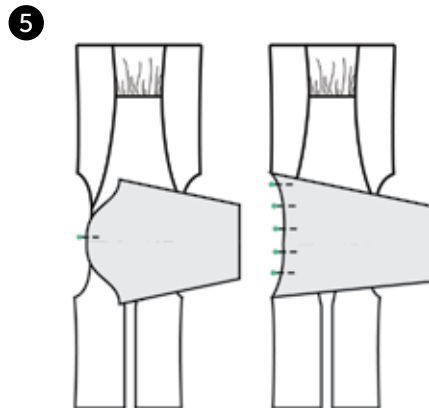
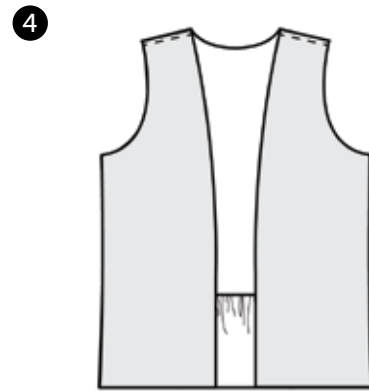
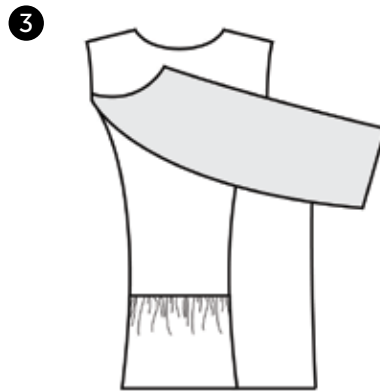
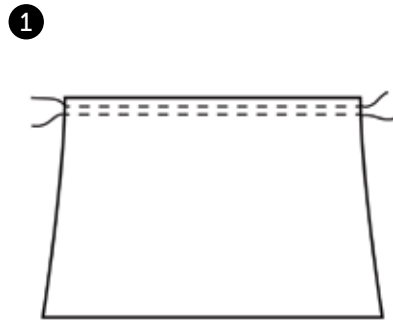
SIZE CHART													
Size	0	2	4	6	8	10	12	14	16	18	20	22	24
<b>IMPERIAL (IN.)</b>													
Bust	32	33	34	35	36	37.5	39	40.5	42.5	44.5	46.5	48.5	50.5
Waist	24	25	26	27	28	29.5	31	32.5	36.5	38.5	40.5	42.5	44.5
Hip	34.5	35.5	36.5	37.5	38.5	40	41.5	43	45	47	49	51	53
<b>METRIC (CM.)</b>													
Bust	81	84	86	89	91	95	99	103	108	113	119	124.5	129.5
Waist	61.5	64	66.5	69	72	75.5	79.5	83.25	93.5	99	103.5	109	114
Hip	86	90	93	95	98	101	105	109	114	119	125.5	131	136

FINISHED MEASUREMENTS													
Size	0	2	4	6	8	10	12	14	16	18	20	22	24
<b>IMPERIAL (IN.)</b>													
Bust	32.5	33.5	34.5	35.5	36.5	38.5	39.5	41.5	43.5	45.5	47.5	49.5	51.5
Waist	32.5	33.5	34.5	35.5	36.5	38.5	39.5	41.5	43.5	45.5	47.5	49.5	51.5
Hip	38	39	40	41	42	44	45	47	49	51	53	55	57
Length	24												
<b>METRIC (CM.)</b>													
Bust	82.5	85	87.5	90	92.5	97.5	100	105	110	115	120	125	130
Waist	83	85.5	88	90.5	93	98	100.5	105.5	110.5	115.5	120.5	125.5	130.5
Hip	96.25	98.75	101.25	103.75	106.25	111.25	113.75	118.75	123.75	128.75	133.75	138.75	143.75
Length	60												

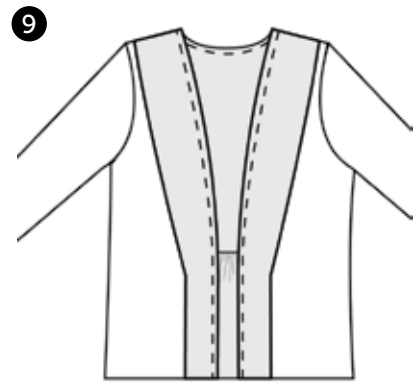
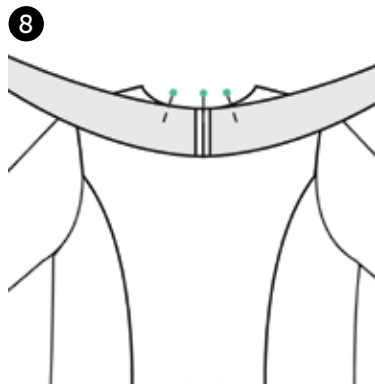
## INSTRUCTIONS

Use a  $\frac{3}{8}$ " seam allowance unless otherwise noted. Note that the main seams are constructed with a serger while the topstitching is done with a sewing machine. However, a sewing machine can be used for all steps.

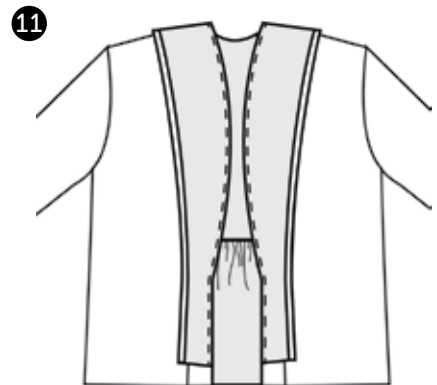
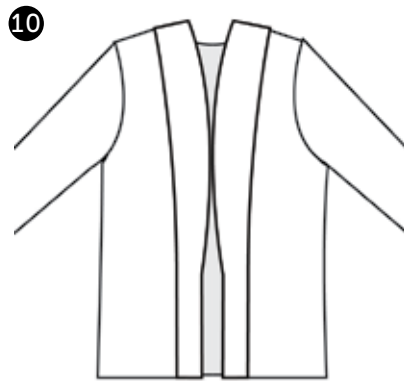
1. Sew a gathering stitch  $\frac{1}{4}$ " from the top edge of the lower center back piece. Sew a second line of gathering stitches  $\frac{1}{2}$ " from the top (1).
2. Place the lower center back piece along the bottom of the center back piece, right sides facing, and gather to match (2).
3. Match the curved edge of the side back piece to the center back piece with right sides together; stitch (3).
4. With right sides together, stitch the front and back pieces together at the shoulder seam (4).
5. With right sides together, pin the center of the sleeve to the shoulder seam with right sides facing. Pin the rest of the sleeve into the armhole, easing in the curve as needed. Stitch the sleeve to the bodice and repeat with the second sleeve (5).
6. With right sides together, sew the front and back pieces together along the side seam and under-arm seam (6).
7. Stitch the shawl collar pieces together along the center back edge, and press the seam allowance open. Repeat for shawl collar facing, then press the long straight edge of the facing towards the wrong side  $\frac{1}{4}$ " (7).



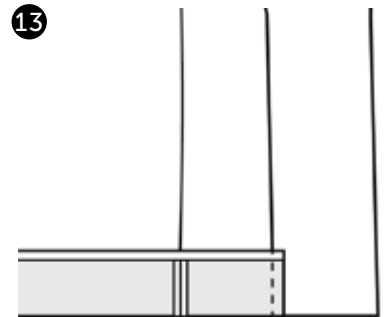
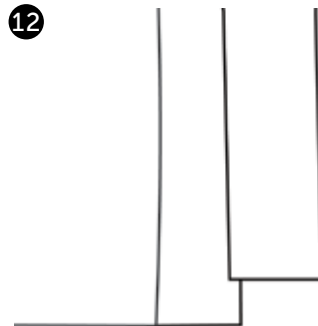
8. Pin the long straight edge of the shawl collar piece to the jacket with right sides together, matching the seam with the jacket center back. Continue pinning the collar to the blazer without stretching (8). Stitch the collar in place (9). Turn the collar right side out and press the seam allowance toward the collar (10).



9. Place the collar facing on the collar along the curved edge, with right sides together. Match the center back, front roll point and the bottom of the facing with the notch on the collar. Stitch the collar facing to collar along the outside edge (11).

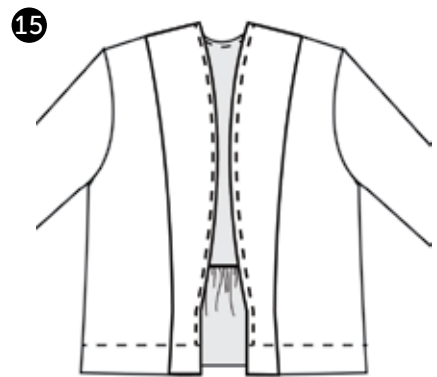
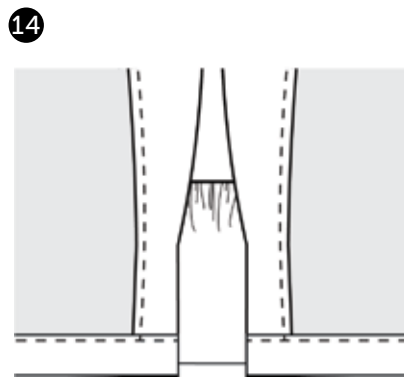


10. Open the blazer so the collar facing and seam allowance are open away from the blazer. Press the seam allowance (12). Press the bottom edge of the blazer 1/4" towards the wrong side and press. Fold the bottom hem up towards the blazer 2". Stitch the hem to the blazer along the seam between the collar and collar facing with the 1/4" fold intact (13). Repeat for the other blazer front edge.



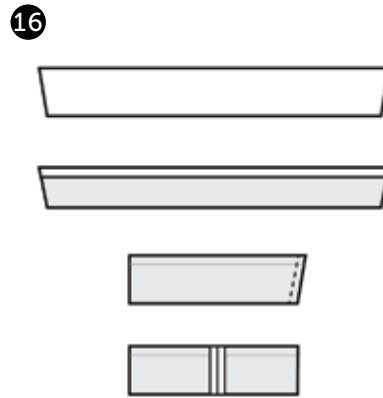
11. Flip the hem toward the wrong side and tuck the facing into the hem. Press the hem at 2" around the entire blazer; stitch in place along the inside folded edge.

12. Stitch the collar facing in place 1/8" from the inside folded edge, starting at the topstitching of the bottom hem around to the other hem (14).

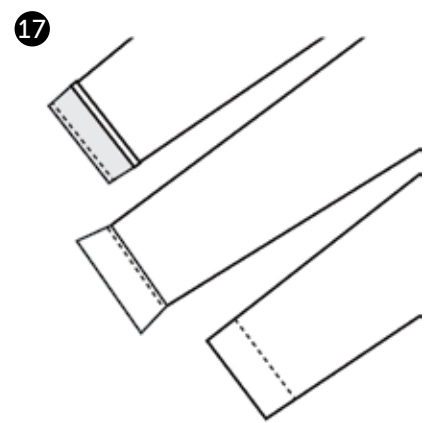


13. Topstitch 1/8" from the inside edge around the entire collar, starting at the topstitching of the bottom hem around to the other bottom hem (15).

**14.** Fold the long edge of the sleeve facing  $\frac{1}{4}$ " to the wrong side. Press well and then unfold. With right sides together, fold the sleeve facing in half, matching up the angled edge; stitch. Press the seam allowance open. Repeat with the second sleeve facing **(16)**.



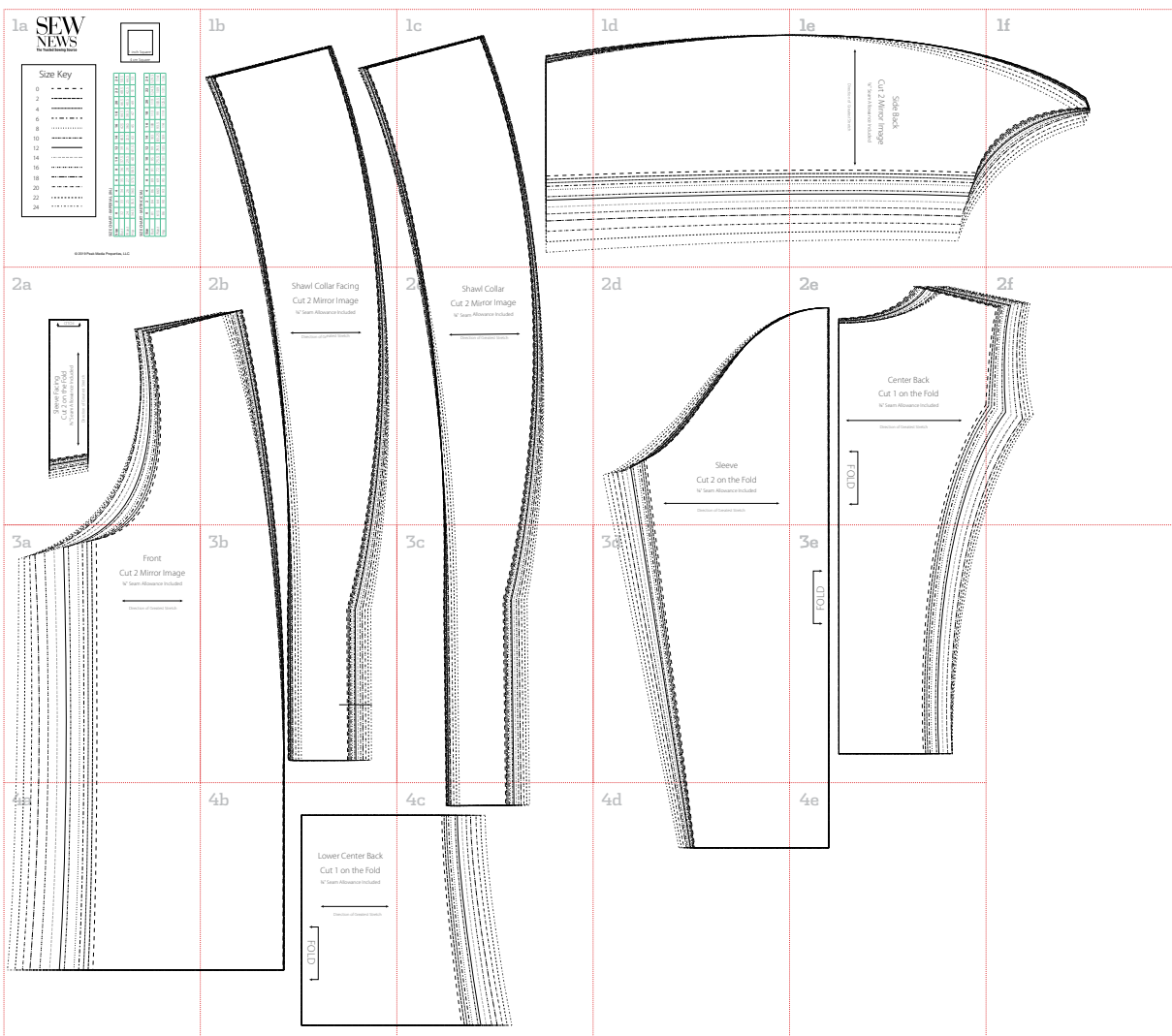
**15.** Fold and press the top edge of the sleeve facing from the previous step. Slip the facing over the raw sleeve end, matching the underarm seam of the sleeve with the facing seam. The non-folded edge of the facing will be matched with the sleeve raw edge. Stitch in place. Press the seam allowance and the facing away from the sleeve. Understitch the seam allowance to the facing. Fold the facing towards the inside of the sleeve and press well. Stitch the sleeve facing in place  $\frac{1}{8}$ " from the inside folded edge. Repeat with the second sleeve **(17)**.



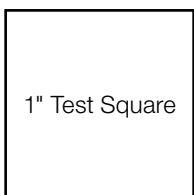
*tip* If your sleeve doesn't fit over the machine free arm, stitch from the inside of the sleeve, using the edge of the facing as a guide.



# SILVERTON BLAZER



Template overview



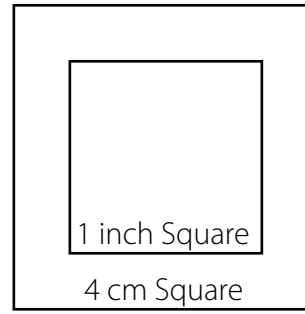
22 pages: 1a-1f, 2a-2f, 3a-3e, 4a-4e

Print this page first at 100%, then measure the 1" test square before printing full pattern.

# 1a

# SEW NEWS

The Trusted Sewing Source



## Size Key

0	---
2	---
4	---
6	---
8	---
10	---
12	---
14	---
16	---
18	---
20	---
22	---
24	---

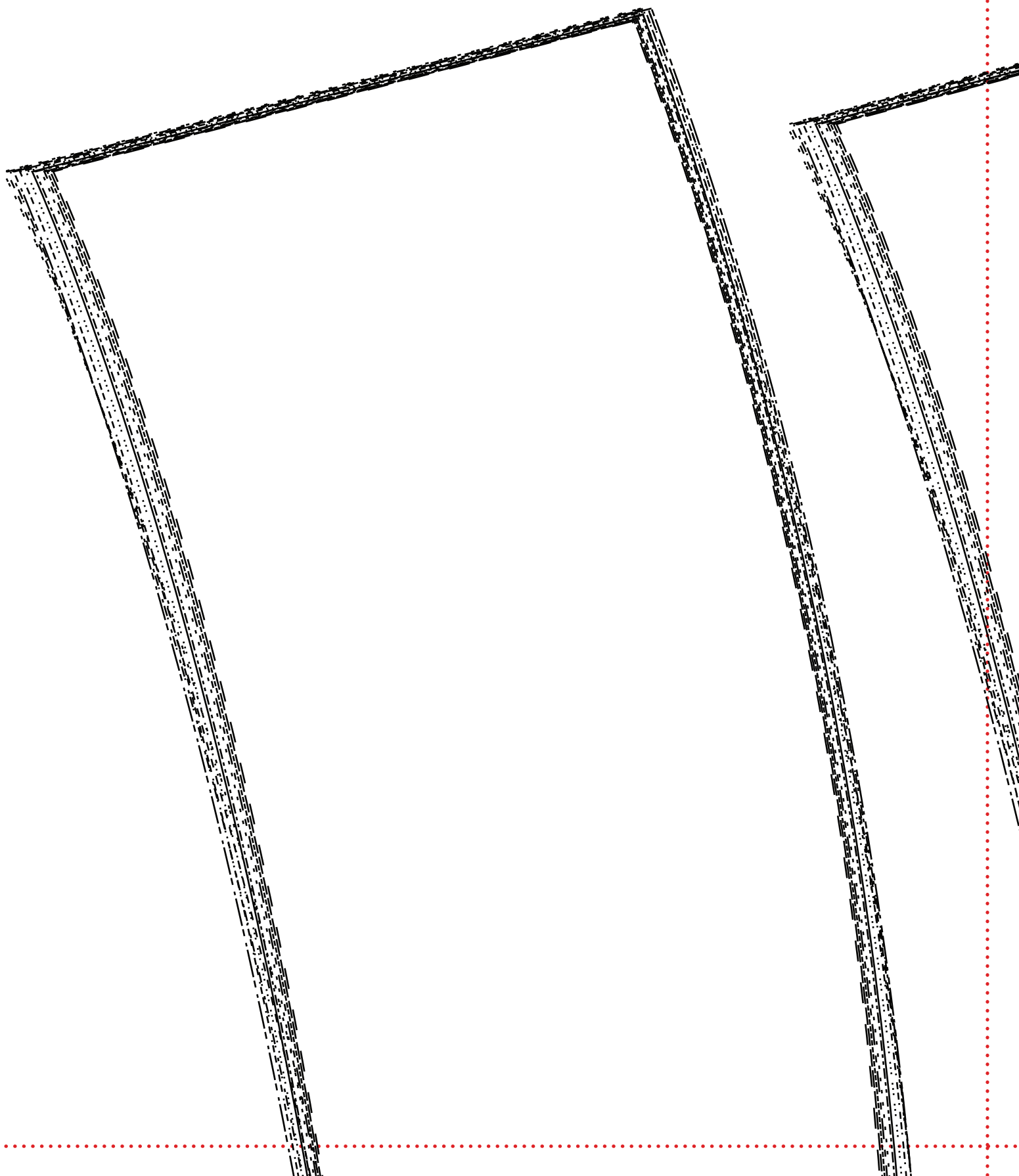
**SIZE CHART - IMPERIAL (IN.)**

Size	0	2	4	6	8	10	12	14	16	18	20	22	24
Bust	32	33	34	35	36	37.5	39	40.5	42.5	44.5	46.5	48.5	50.5
Waist	24	25	26	27	28	29.5	31	32.5	36.5	38.5	40.5	42.5	44.5
Hip	34.5	35.5	36.5	37.5	38.5	40	41.5	43	45	47	49	51	53

**SIZE CHART - METRIC (CM.)**

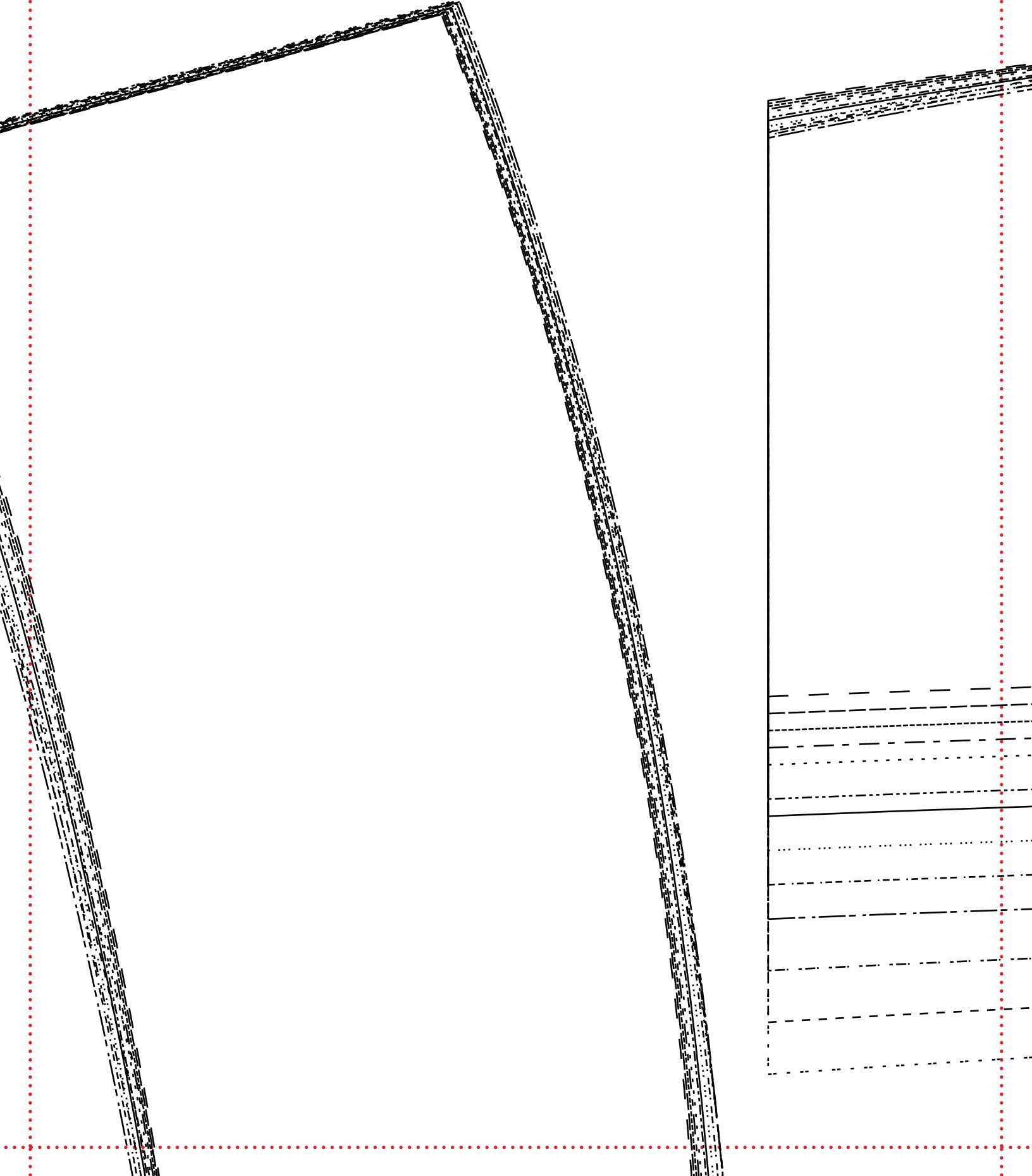
Size	0	2	4	6	8	10	12	14	16	18	20	22	24
Bust	81	84	86	89	91	95	99	103	108	113	119	124.5	129.5
Waist	61.5	64	66.5	69	72	75.5	79.5	83.25	93.5	99	103.5	109	114
Hip	86	90	93	95	98	101	105	109	114	119	125.5	131	136

1b

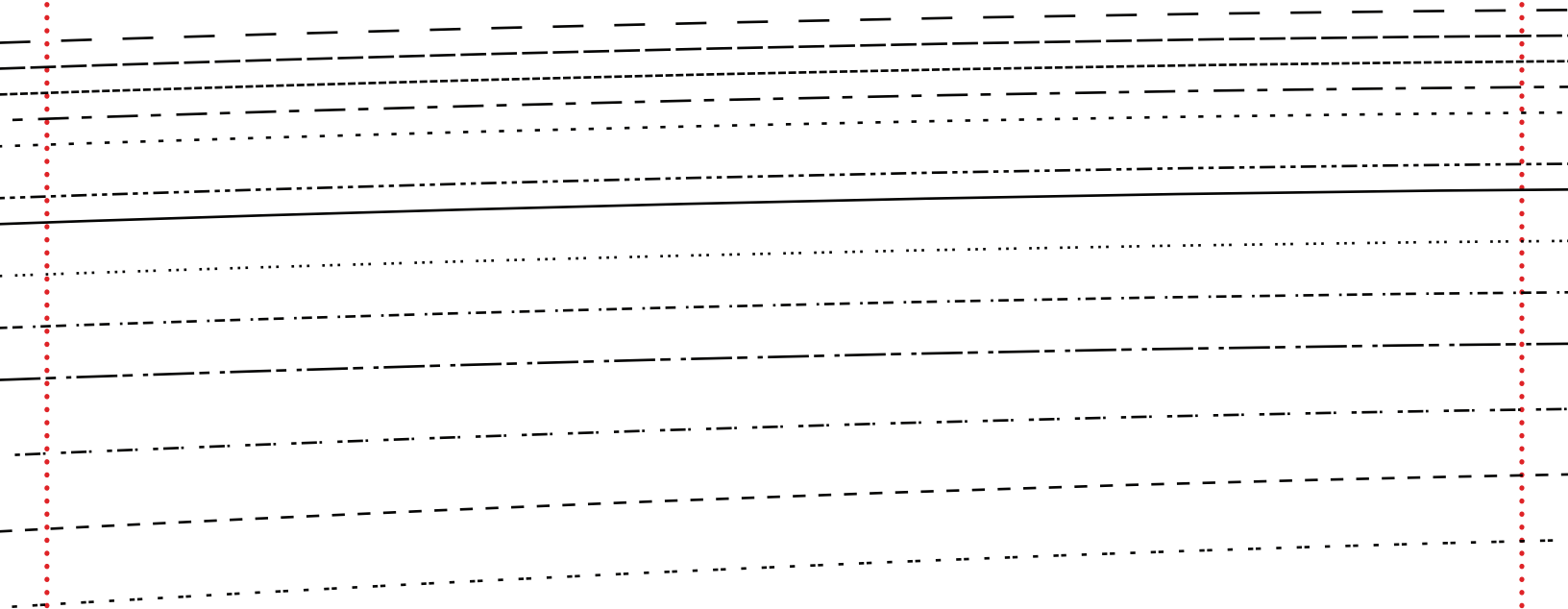
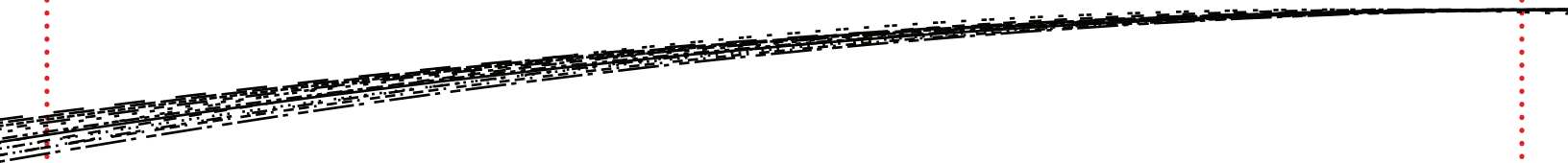




1c



1d

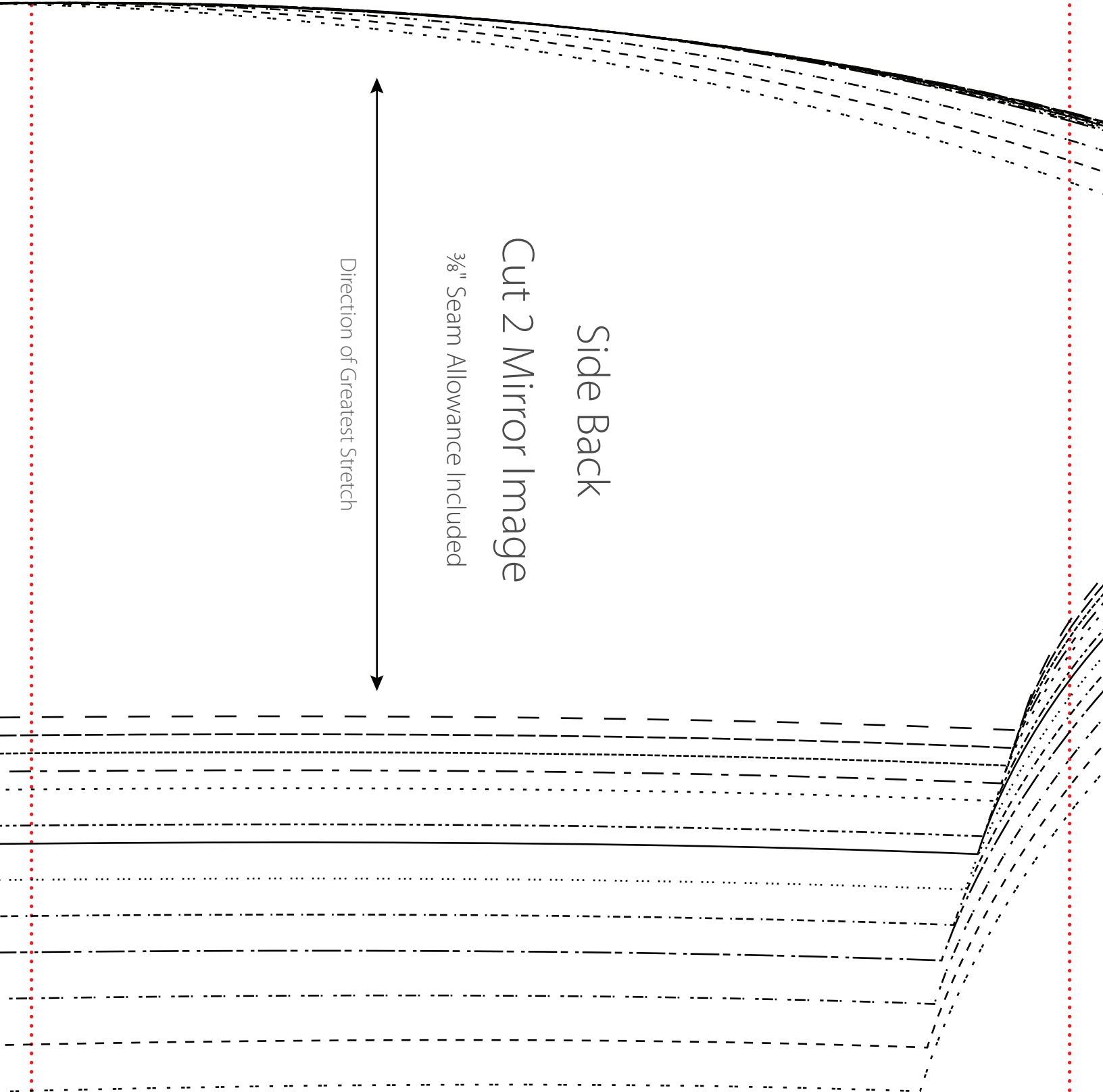


1e

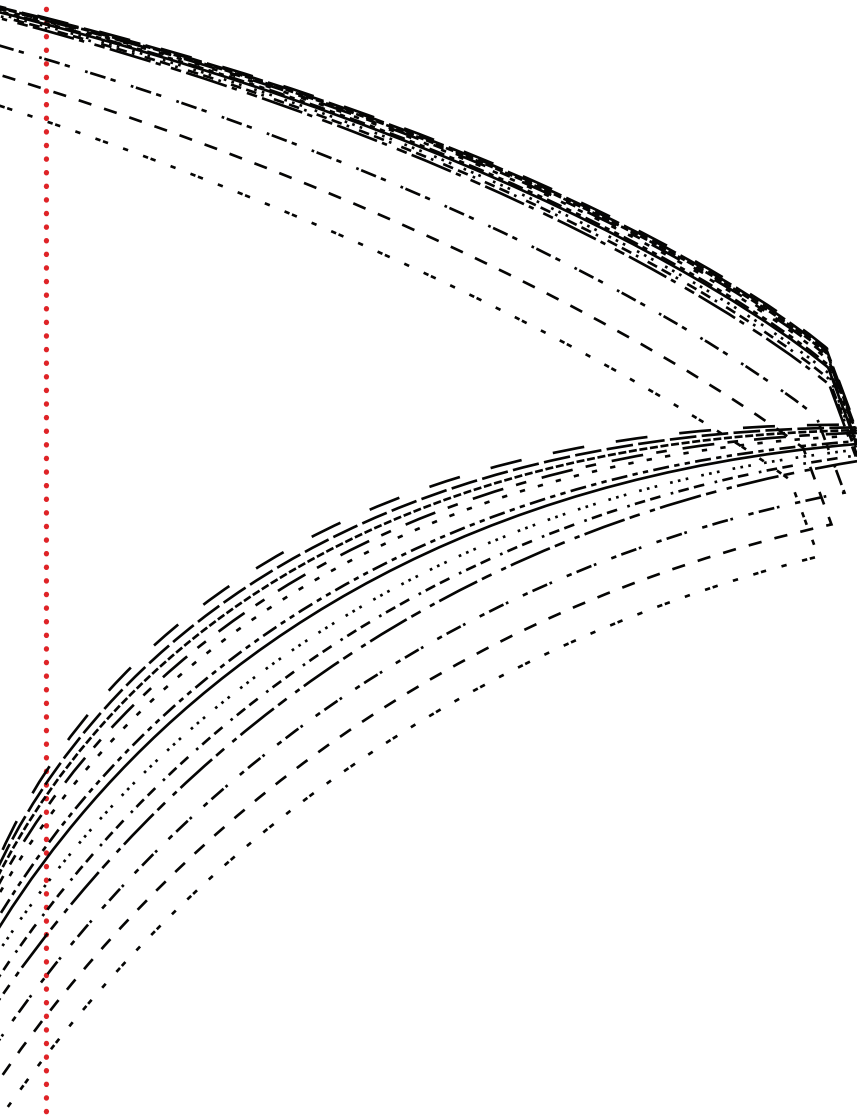
Direction of Greatest Stretch



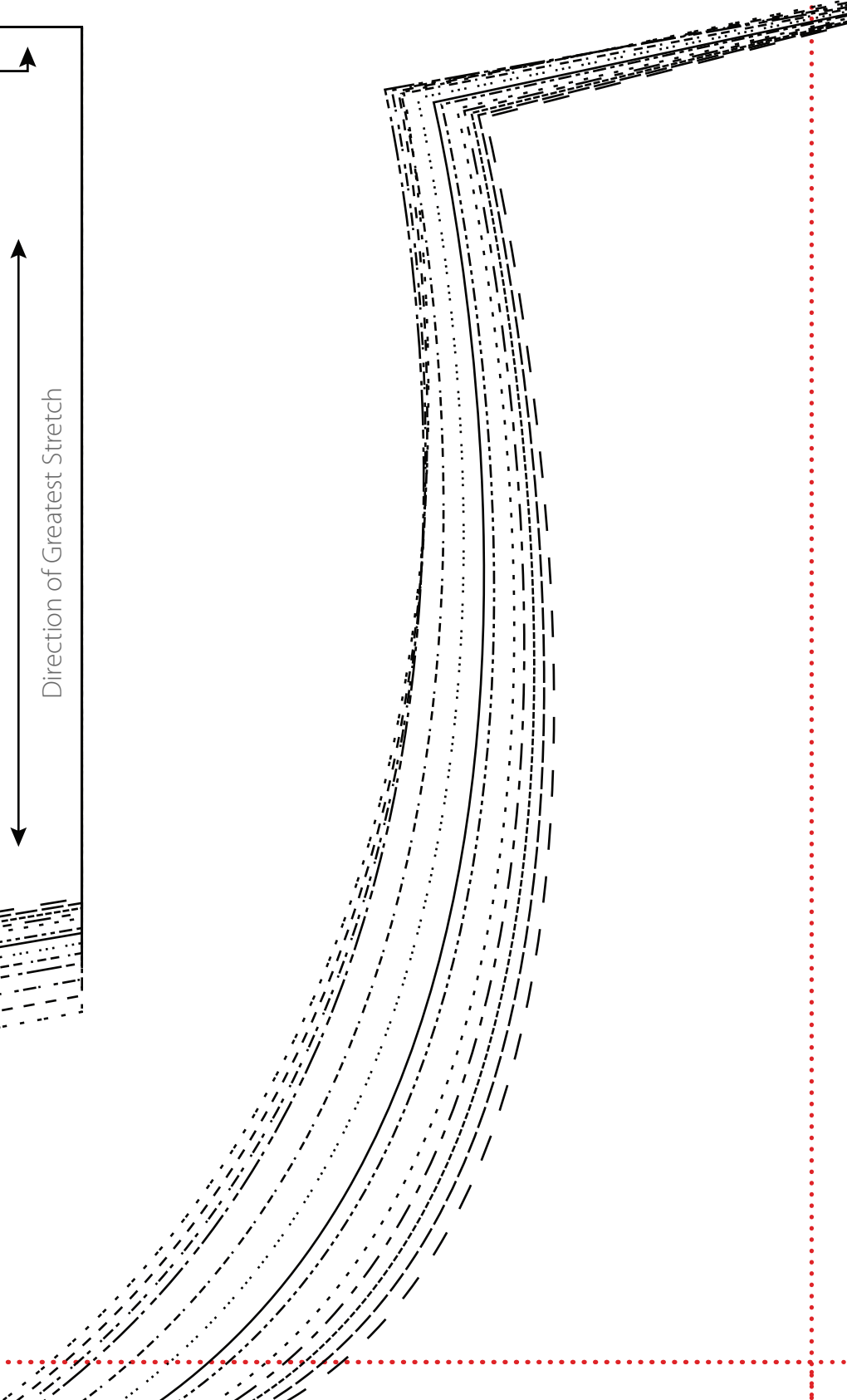
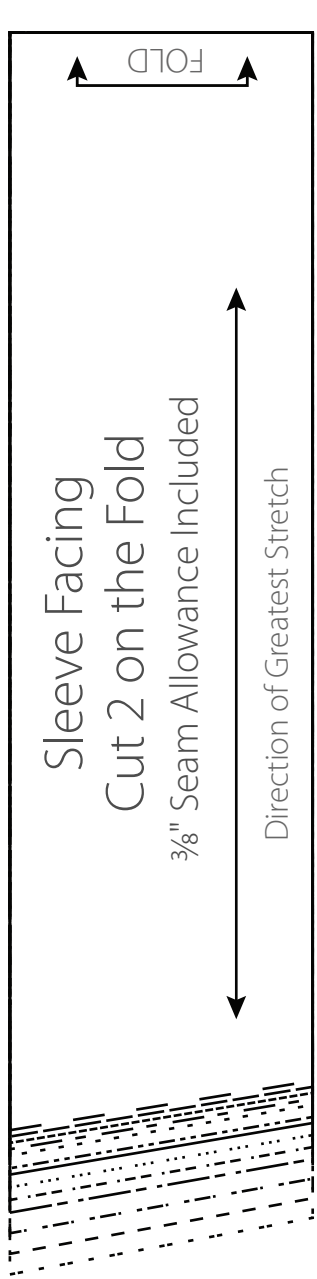
Side Back  
Cut 2 Mirror Image  
 $\frac{3}{8}$ " Seam Allowance Included



1f



# 2a

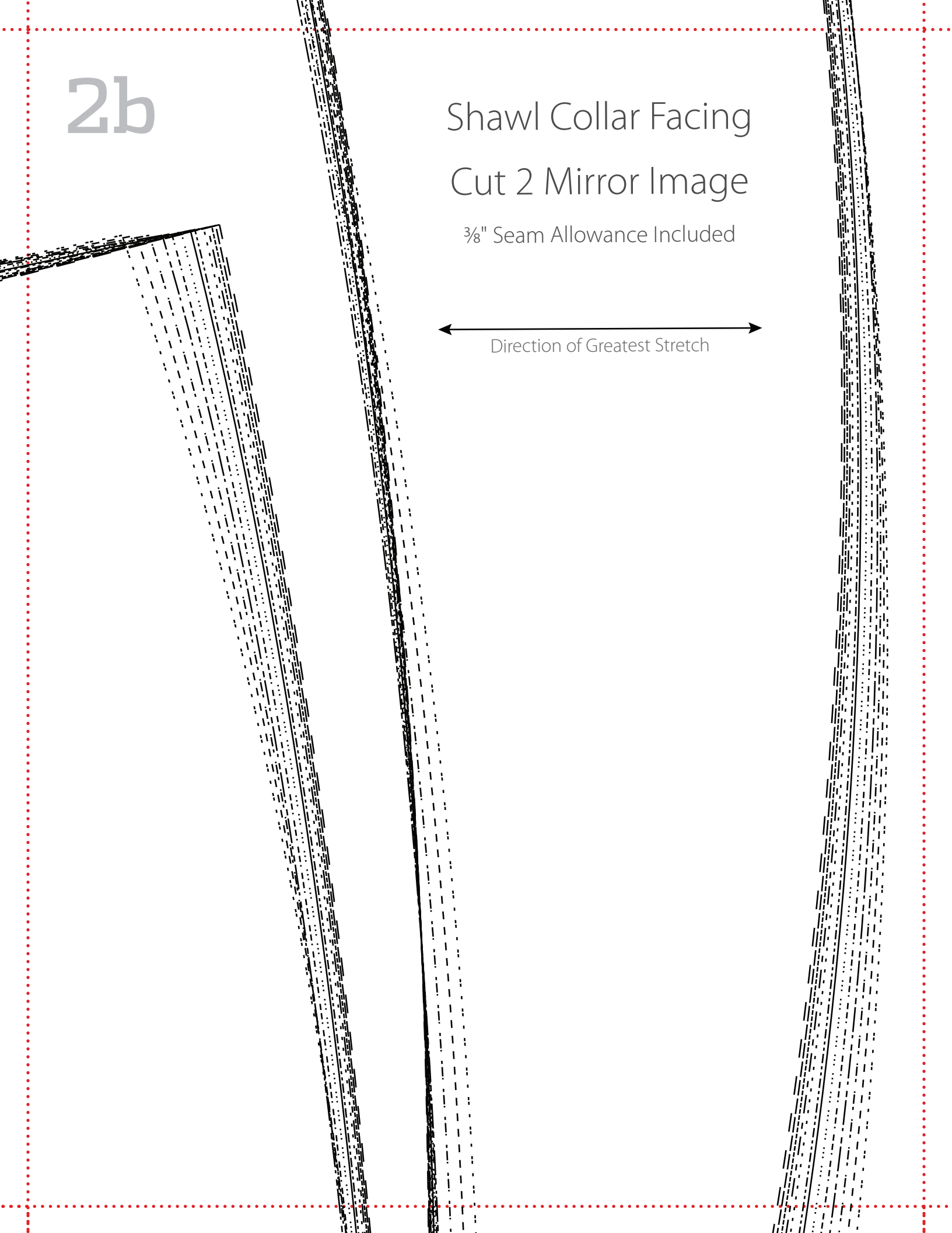


2b

Shawl Collar Facing  
Cut 2 Mirror Image

$\frac{3}{8}$ " Seam Allowance Included

← Direction of Greatest Stretch →

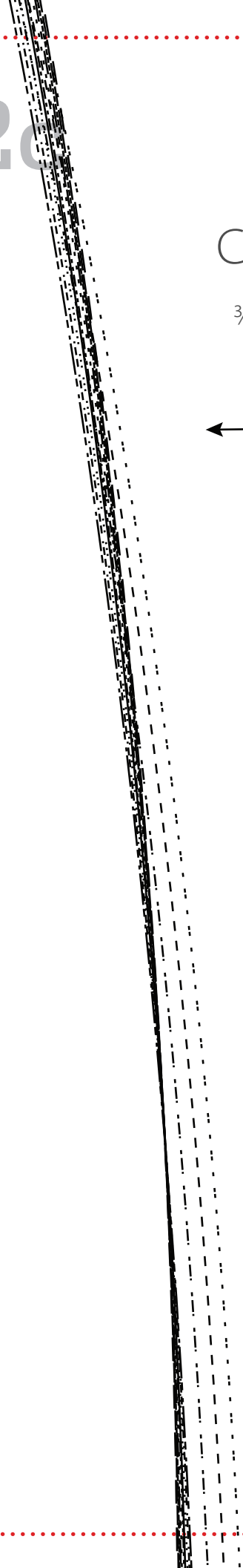


2c

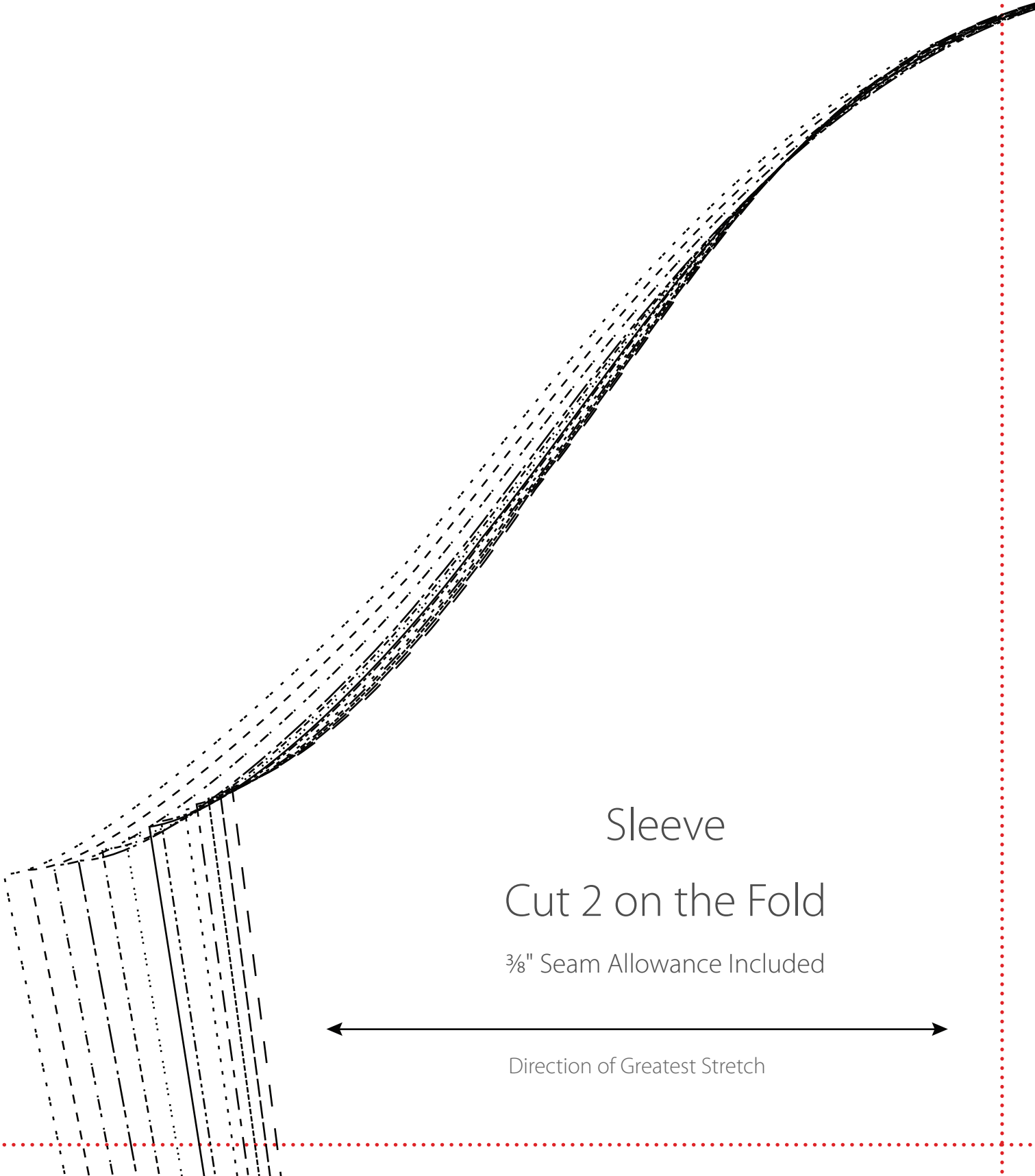
# Shawl Collar

Cut 2 Mirror Image

$\frac{3}{8}$ " Seam Allowance Included



2d



Sleeve

Cut 2 on the Fold

$\frac{3}{8}$ " Seam Allowance Included



Direction of Greatest Stretch

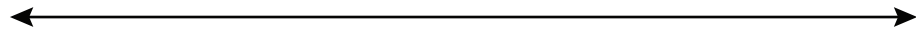


2e

Center Back

Cut 1 on the Fold

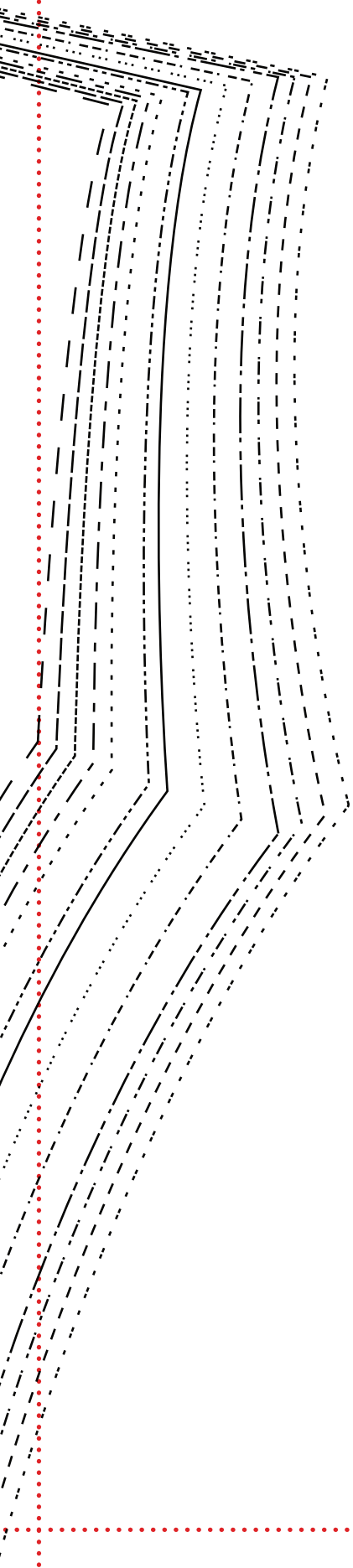
$\frac{3}{8}$ " Seam Allowance Included



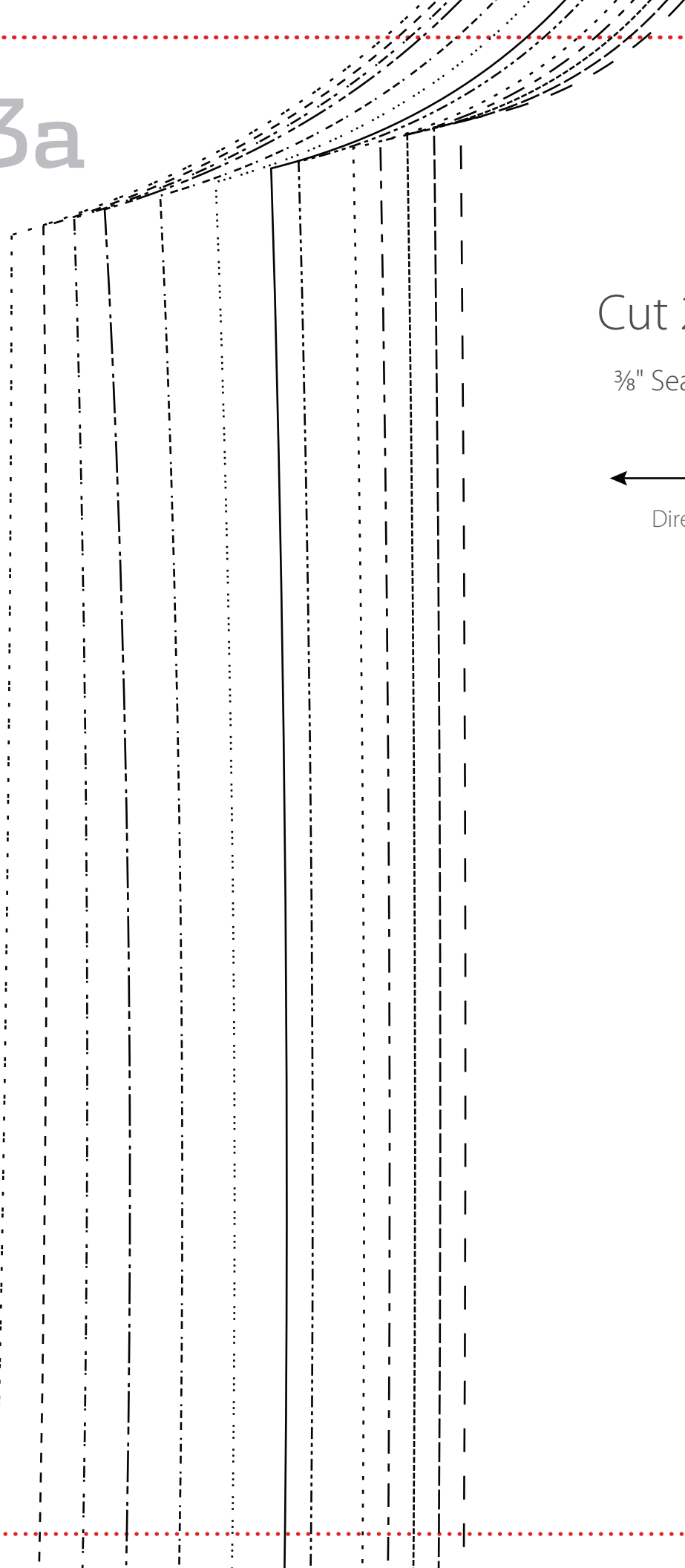
Direction of Greatest Stretch



2f



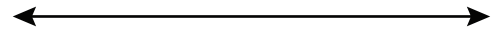
3a



Front

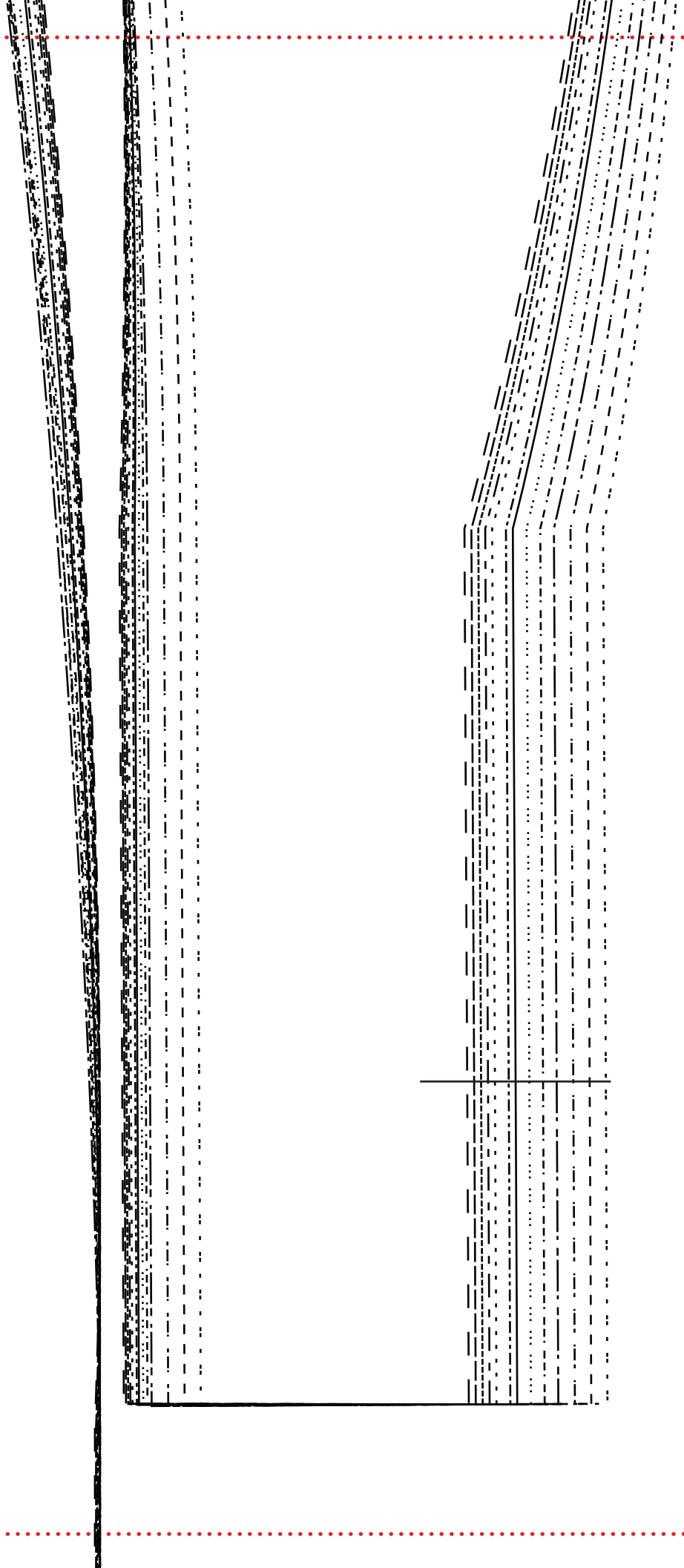
Cut 2 Mirror Image

$\frac{3}{8}$ " Seam Allowance Included

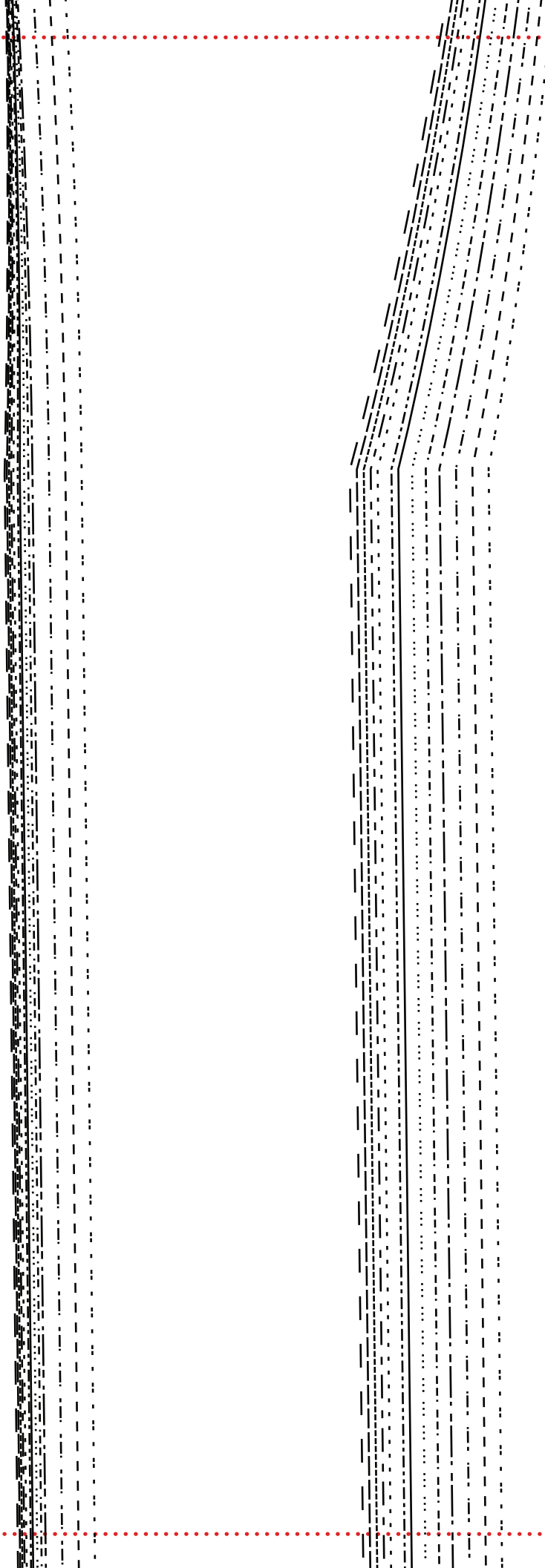


Direction of Greatest Stretch

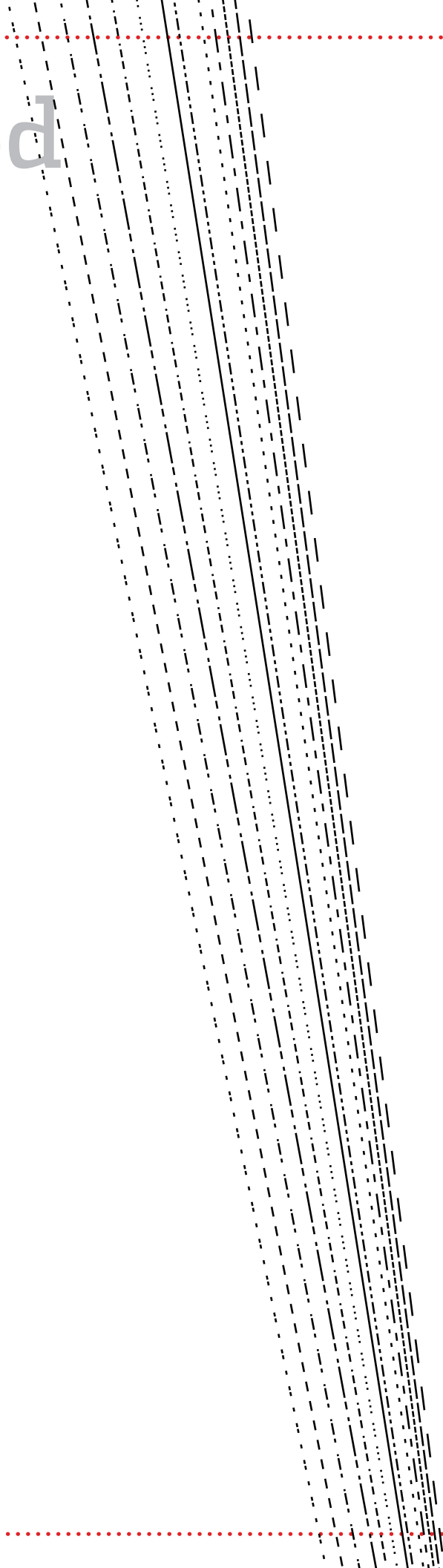
3b



3c

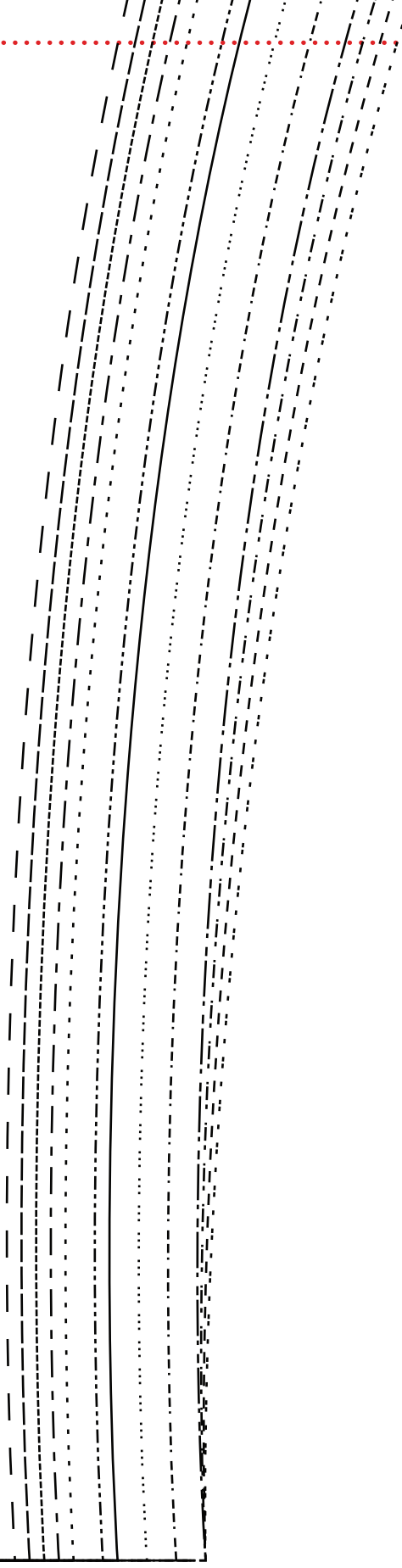


3d

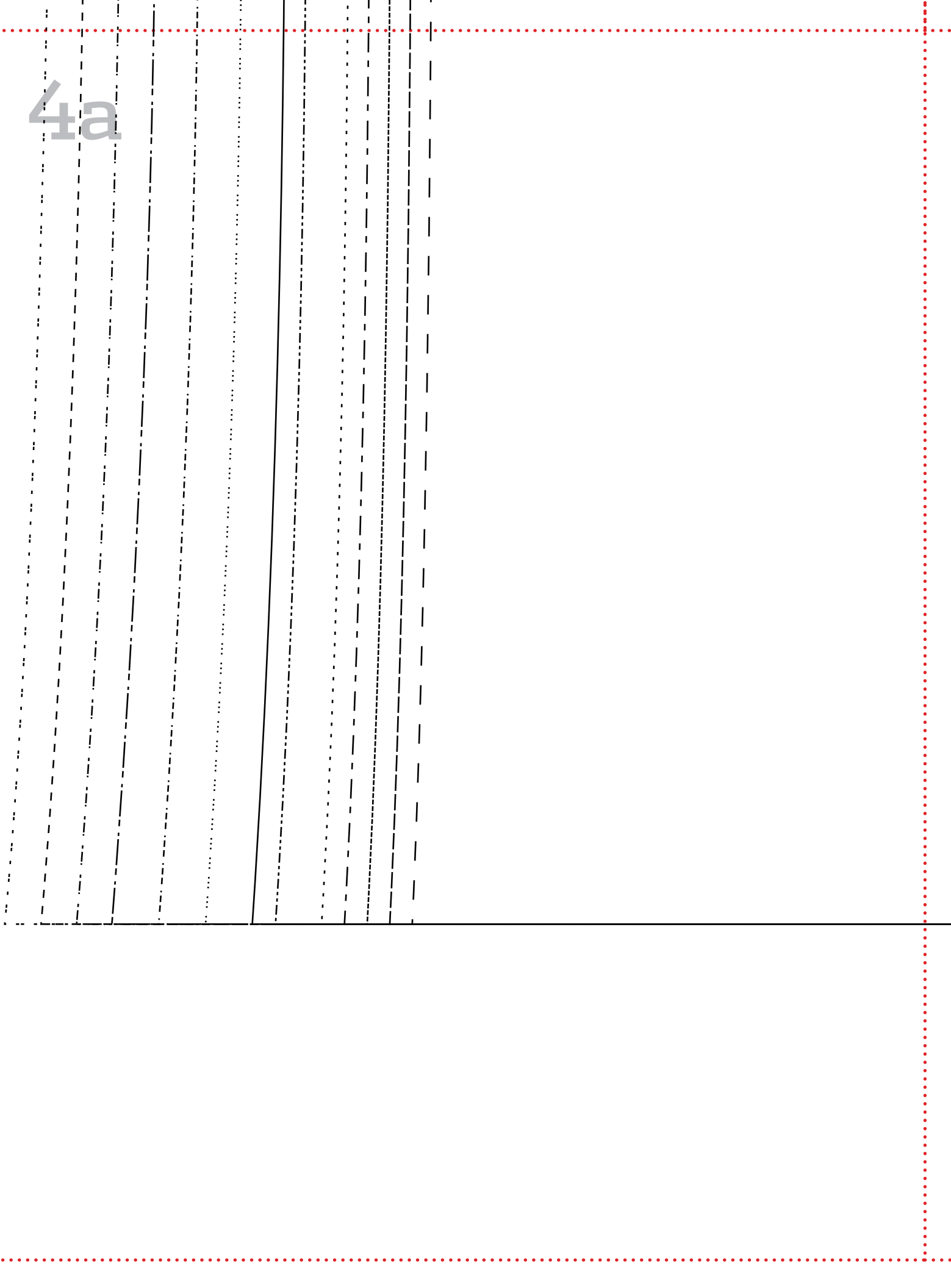


3e

FOLD



4a



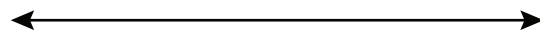


4b

Lower Center Back

Cut 1 on the Fold

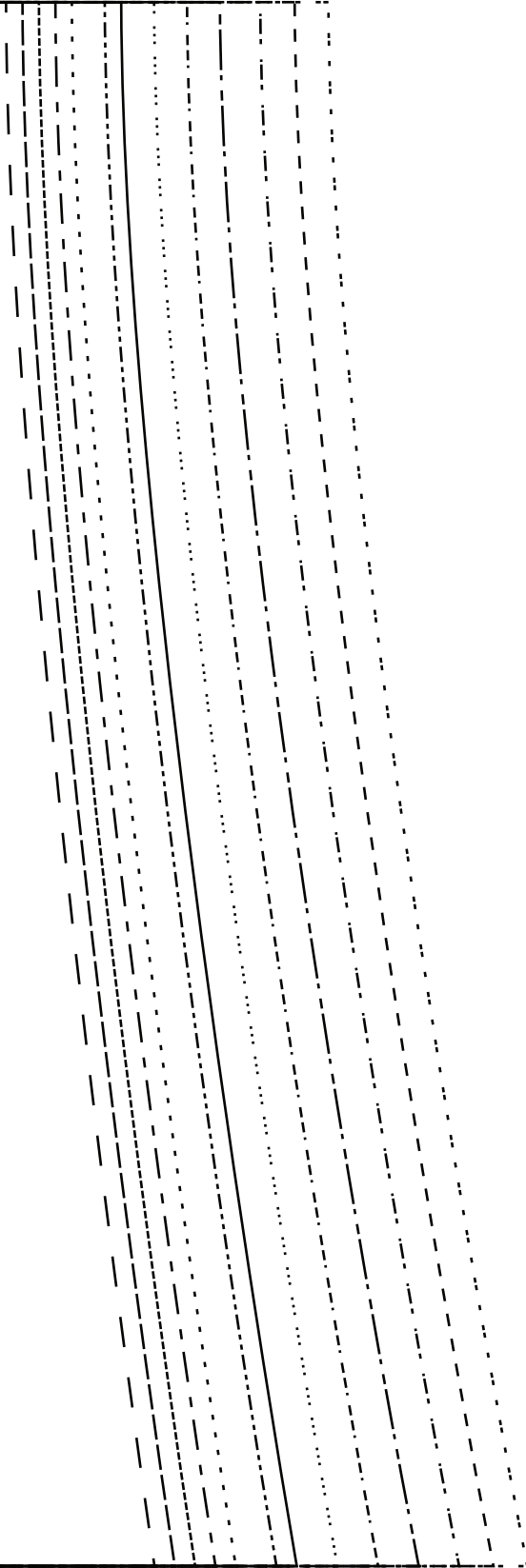
$\frac{3}{8}$ " Seam Allowance Included



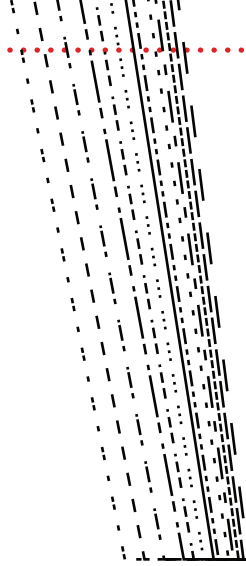
Direction of Greatest Stretch



4c



4d



4e